

WORKING
PAPERS IN
RESPONSIBLE
BANKING &
FINANCE

**Strategic Communication
among Banks**

*By Christian Bittner, Falko Fecht,
Melissa Pala, and Farzad Saidi*

Abstract: Do economic incentives govern information diffusion in markets? Using international banks' advisory activities in corporate takeovers as their source of private information, we show in supervisory data that banks with closer ties to the target, but not the acquirer, advisor trade profitably in the target's stock prior to the deal announcement. This trading behavior is associated with a higher premium paid by the acquirer without compromising the deal success. As the incentives of informed traders are aligned only with those of the target shareholders, which are represented by the target advisor, our evidence suggests strategic information transmission among these banks.

WP N° 24-025

4th Quarter 2024



Strategic Communication among Banks^{*}

Christian Bittner¹ Falko Fecht² Melissa Pala³ Farzad Saidi⁴

March 7, 2024

Abstract

Do economic incentives govern information diffusion in markets? Using international banks' advisory activities in corporate takeovers as their source of private information, we show in supervisory data that banks with closer ties to the target, but not the acquirer, advisor trade profitably in the target's stock prior to the deal announcement. This trading behavior is associated with a higher premium paid by the acquirer without compromising the deal success. As the incentives of informed traders are aligned only with those of the target shareholders, which are represented by the target advisor, our evidence suggests strategic information transmission among these banks.

JEL Codes: D22, G14, G20, G21, L14

Keywords: bank networks, trading, information transmission, mergers and acquisitions, syndicated lending

^{*}We thank Leonidas Barbopoulos, Tobias Berg, Jean-Edouard Colliard, Eliezer Fich, John Griffin, Martin Götz, Matthias Meier, Christian Opp, Marco Pagano, Nengqi Pan, Paul Voss, and seminar participants at HKUST, Australian National University, University of Warwick, Tinbergen Institute, University of St. Gallen, UT Austin, City University London, TU Munich, the Bundesbank workshop on "Financial System in Flux," the 2022 Financial Markets and Corporate Governance Conference, and the 5th Conference on Contemporary Issues in Banking at the University of St Andrews for helpful comments. Saidi acknowledges funding by the Deutsche Forschungsgemeinschaft (DFG, German Research Foundation) under Germany's Excellence Strategy (EXC 2126/1 – 390838866) and through CRC TR 224 (Project C03). This research was conducted under Bundesbank research project number 2018/0050. The paper represents the authors' personal opinions and not necessarily the views of the Deutsche Bundesbank or the Eurosystem.

¹ Deutsche Bundesbank and Goethe University Frankfurt

² Deutsche Bundesbank and Frankfurt School of Finance & Management

³ Baden-Württemberg Cooperative State University

⁴ University of Bonn and CEPR

1 Introduction

How do economic incentives govern the diffusion of private information and resource allocation in financial markets? Attempts to microfound this relationship are centered on the incentives to *produce* and *share* information in social networks (Herskovic and Ramos, 2020; Leister, Zenou, and Zhou, 2021; Kranton and McAdams, 2022), such as those of interconnected banks. However, empirical evidence is limited to the economic consequences of social connections and the extent to which they facilitate social learning and the transmission of private information (Bailey, Cao, Kuchler, Stroebel, and Wong, 2018; Bailey, Gupta, Hillenbrand, Kuchler, Richmond, and Stroebel, 2021). While banks' key economic role is typically seen in collecting, processing, and producing private information relevant for financial decisions (Boot, 2000; Morrison and Wilhelm, 2007), little is known about banks' incentives to disseminate private information within their relationship networks and how this affects market outcomes.

This paper studies under what circumstances and how incentives matter for the transmission of private information between banks. In particular, we use syndicated-loan networks of banks in conjunction with administrative security-transaction data to infer information flows around the announcement of corporate mergers and acquisitions (M&A). We consider the possibility that banks serving as advisors in the market for corporate control may strategically share private information regarding imminent takeovers with other banks. We show that such information transmission exists and benefits the members of syndication networks: banks connected to advisors of takeover targets through frequent joint syndicated lending purchase the target firms' shares at lower prices prior to takeover announcements and subsequently reap trading gains.

Our empirical strategy is based on the idea that banks establish relationships when syndicating loans together. These relationships allow banks to share private information that some of them obtain when simultaneously acting as advisors to target and acquirer firms in M&A transactions. The M&A context helps to identify the source of private information. Furthermore, we can keep constant private information while exploiting the fact that incentives for transmitting information about imminent transactions vary across traded stocks. This is because

announcement returns are positive primarily for target, rather than acquirer, stocks. If traders—e.g., other banks—act on this information and buy target stocks prior to takeover announcements, the takeover price increases, which implies that the target shareholders receive a larger share of the surplus. This would, however, not be in the interest of the acquirer shareholders. In contrast, the incentives of privately informed traders and target shareholders are aligned. Therefore, if advisors act in the interest of their clients, only target, but not acquirer, advisors have an incentive to share private information about imminent takeovers.

To measure the strength of banks' ties to target and acquirer advisors, we use the fraction of jointly issued syndicated loans. In doing so, we can contrast the relative importance of trading banks for advisors and vice versa. Consistent with the idea that advisors share information with connected banks as part of an exchange of favors, we find that banks that are more important for the target advisor's syndicated-loan business are more likely to trade on private information about imminent takeovers.

Using administrative data at the bank-security-date level from Germany, we can estimate the effect of banks' connectedness to target and acquirer advisors on their trades around international takeover announcements. The granularity of our data, and the fact that we exploit takeover-specific variation across banks, allows us to control for time-varying unobserved heterogeneity at the security and the (trading) bank level. Banks that are closely connected to the target advisor purchase more shares of the target, but not of the acquirer, in the 30 days prior to the takeover announcement and, thus, at a lower price. In contrast, we find no such effects when considering the trading bank's degree of connectedness to the acquirer advisor. These effects are stronger when the potential trading gains are larger, i.e., for cash, as opposed to stock, transactions.

When banks that are more connected to target advisors purchase target shares ahead of takeover announcements, they do not merely emulate advisors' trading behavior, as we do not find advisors to act on their private information and purchase target shares themselves (consistent with [Griffin, Shu, and Topaloglu, 2012](#)). This suggests that target advisors indeed *share* private information about imminent takeovers. At the deal level, we then show that they benefit from

sharing such information to connected traders as it helps drive up the pre-announcement stock price of the target and, as such, the final price paid. This does not come at the cost of lower deal success probabilities, which would diminish the expected revenues accruing to the target advisor.

Our evidence therefore suggests that target advisors have an incentive to share this private information, and they do so with connected banks that actively trade shares of non-financial corporations. By affecting the premium paid, this has real implications for the division of surplus in M&A transactions, without any repercussions for the reputation of the target advisor who, on the contrary, successfully represents the target shareholders' interests.

Our empirical laboratory resembles the theoretical setup in [Antić and Persico \(2017, 2020\)](#) and [Voss and Kulms \(2022\)](#), based on the seminal model of strategic information transmission by [Crawford and Sobel \(1982\)](#) and built around an endogenous conflict of interest between shareholders and management that governs the extent of information transmission. Our setting is closer to [Voss and Kulms \(2022\)](#) in that the conflict of interest is determined by the price offer of an external bidder, i.e., the acquirer, or by the target's stock price, which is affected by trades in the target stock. We vary the degree of the conflict of interest between the advisors and trading banks by exploiting the fact that connected banks' trading motives are aligned only with the incentives of the target, but not of the acquirer, shareholders. Our evidence is consistent with the idea that strategic communication can foster efficient trade in the market for corporate control.¹

To capture information flows, we make use of syndicated-loan networks among banks. Syndicate members receive borrower-related private information from the lead arranger that can be—and appears to be—exploited in the trading of borrower stocks ([Bushman, Smith, and Wittenberg-Moerman, 2010](#); [Ivashina and Sun, 2011](#); [Addoum and Murfin, 2020](#)). In line with the idea that there is information transmission within banks, [Acharya and Johnson \(2007\)](#) and [Haselmann, Leuz, and Schreiber \(2023\)](#) show that banks use their private information on borrower firms, respectively, in the credit-derivatives market and in their securities trading around major cor-

¹Electronic communications such as one-to-one or multilateral chatrooms had been used in the past to disseminate sensitive information, see https://ec.europa.eu/commission/presscorner/detail/en/IP_19_2568 and <https://www.gov.uk/government/news/cma-provisionally-finds-5-banks-broke-competition-law-on-uk-bonds>.

porate events, including mergers and acquisitions. In terms of the latter, there is evidence that traders that are affiliated with the target's (Mooney, 2022) or the acquirer's (Bodnaruk, Massa, and Simonov, 2009) investment-bank advisor belonging to the same financial conglomerate try to benefit from holding the target's stock prior to M&A announcements. In contrast, Griffin, Shu, and Topaloglu (2012) find no evidence that clients of target or acquirer advisors buy shares prior to takeover announcements through the respective advisor banks' brokerage arms.

Rather than studying the information transmission within banks, our paper identifies information transmission *between* banks and highlights a potentially important side effect of the ever-increasing interconnectedness of the financial sector. As such, it is related to, and potentially interacts with, the notion of banks as information transmitters between competing firms (Asker and Ljungqvist, 2010), besides the possibility of using common connections, such as overlapping board members, to acquire private information about takeover targets (Cai and Sevilir, 2012).

We use the syndication process for loans to uncover information networks on an international scale. This novel channel complements previously discussed information networks in the literature. As Kuchler and Stroebe (2021) highlight, at various levels social connections serve as a means of sharing private information and facilitating social learning in financial decision-making. For instance, Rehbein and Rother (2022) find that stronger social connections boost cross-regional bank lending especially for information-sensitive loans. Using common ownership as a channel of information transmission, Colombo, Grigolon, and Tarantino (2021) show that within loan syndicates lead banks and (commonly owned) participants share information regarding the borrower's credit quality.

With respect to the role of information networks and insider trading, Jagolinzer, Larcker, Ormazabal, and Taylor (2020) show that politically connected traders benefited from insider information on TARP. Cohen, Frazzini, and Malloy (2008) present evidence that fund managers hold larger positions, and realize excess returns, on stocks of firms with CEOs that share a common educational background with them. More generally, Ahern (2017) documents how information flowing through strong social ties based on family, friends, and geographic proximity facilitates

insider trading. Finally, [Bradley, Jame, and Williams \(2022\)](#) argues that non-deal roadshows constitute a channel for the transmission of private information between firms' management and institutional investors, allowing the latter to trade profitably. While all of these studies treat established networks as a sufficient condition for information sharing, we show that pre-existing relationships are only a necessary condition, and that economic incentives determine whether private information is actually disseminated across network members.

More explicitly on the use and transmission of insider information, [Meulbroek \(1992\)](#) shows that markets take the possibility of informed trading into account and incorporate it in stock prices. [Ali and Hirshleifer \(2017\)](#) identify and quantify profits from insider trading, while [Jenter \(2005\)](#) analyzes market timing by managers and shows that insiders are contrarian investors.

Various other papers document such patterns in different financial markets and for different sources of private information. [Barbon, Di Maggio, Franzoni, and Landier \(2019\)](#) present evidence that brokers leak information on order flow of block trades, and [Chague, Giovannetti, and Herzkovic \(2023\)](#) do so focusing on short sellers. In the context of mergers and acquisitions, [Augustin, Brenner, and Subrahmanyam \(2019\)](#) report abnormally high trading volumes in out-of-the-money equity call options on targets prior to takeover announcements. [Jegadeesh and Tang \(2010\)](#) find that funds whose main broker is a target advisor are net buyers of target shares before announcement, while [Lowry, Rossi, and Zhu \(2019\)](#) present evidence suggesting informed trading by M&A advisors in options. [Dai, Massoud, Nandy, and Saunders \(2017\)](#) and [Fich, Lantushenko, and Sialm \(2020\)](#) report increases in holdings of future takeover targets by hedge funds.

Trading on or disseminating insider information would contradict banks' fiduciary duties² as this typically hurts bank customers and would, thus, be a cause of regulatory concern, as has been argued by [Puri \(1996\)](#) with regard to universal-banking deregulation.³ Reviewing the literature on insider trading, [Griffin, Shu, and Topaloglu \(2012\)](#) and [Griffin and Kruger \(2024\)](#) argue that such concerns should render it less likely to detect evidence of banks' trading desks utilizing

²The U.S. Securities and Exchange Commission (SEC) lists examples of insider-trading enforcement actions between 2009 and 2014: <https://www.sec.gov/spotlight/insidertrading/cases.shtml>.

³[Egan, Matvos, and Seru \(2019\)](#) document another example of banks' breach of fiduciary duties hurting customers using information of misconduct among financial advisors.

private information. In contrast, we show that information transmission emanating from the target advisor in our M&A setting benefits the target shareholders. Thus, our paper points not only to the primary beneficiaries of insider trading but also to potentially limited downsides for the firms whose shares are traded (akin to [Suk and Wang, 2021](#)).

2 Hypothesis Development

In this section, we discuss banks' incentives to share private information about imminent takeovers with other banks in their business network. We start out by showing that it is profitable to buy target, rather than acquirer, stocks ahead of takeover announcements. [Figure 1](#) demonstrates that target stocks have highly economically and statistically significant announcement returns, controlling for security and date fixed effects, whereas this is not the case for acquirer stocks. This suggests that trading on private information about imminent takeovers is profitable primarily in target stocks, i.e., by purchasing target stocks ahead of announcements. The latter is, in turn, reflected in a more emphasized runup in targets' stock prices ahead of takeover announcements.

While fiduciary duties should, in principle, keep both acquirer and target advisors from disseminating or trading themselves on private information, target advisors can benefit from elevated demand for target stocks and a subsequent increase in the target's stock price prior to takeover announcements, as this might lead to a higher price paid to their clients. Target advisors thus have an economic incentive to allow connected banks to reap trading profits from purchasing target stocks ahead of takeovers. In contrast, if acquirer advisors primarily look after their clients' interests, they lack the incentive to share information on imminent takeovers, as the induced trading behavior of informed traders would increase the takeover cost for the acquirer.

We therefore hypothesize that traders connected to the target advisor are more likely to be informed and trade profitably prior to takeover announcements. To approximate the degree of connectedness between advisors in takeovers and traders, we make use of syndicated-loan networks. In particular, we measure the frequency with which the respective financial institutions

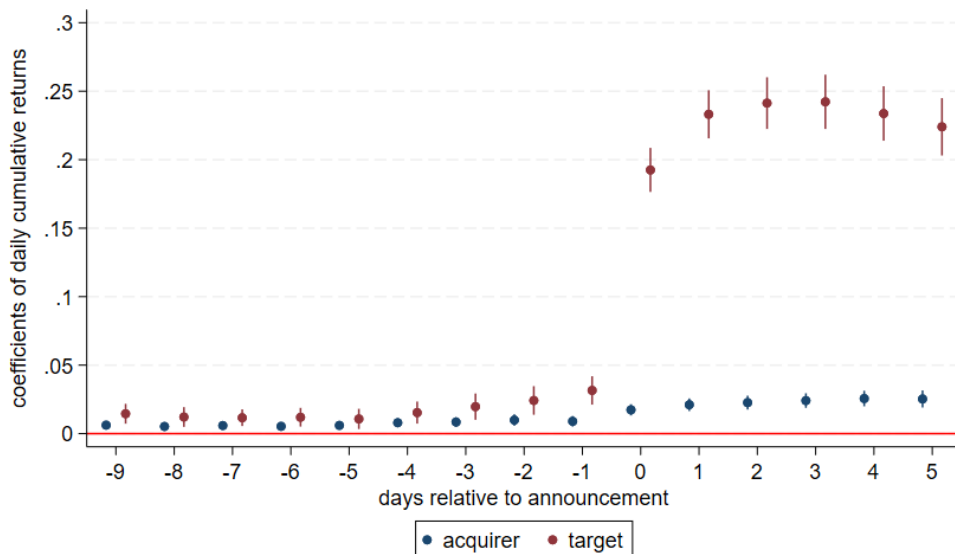


Figure 1: **Cumulative Returns of Acquirer and Target Stocks around Takeovers.** The figure shows the point estimates and 95% confidence intervals for 9 days prior to the announcement and 5 days afterwards, based on the specification: $Return(cumulative)_{st} = \beta_t \sum_{t=-9}^5 Takeover_{st} + \delta_t + \gamma_s + \varepsilon_{st}$, estimated on a sample at the security-date level from 30 days prior to 5 days after the announcement. Standard errors are double-clustered at the security and date level.

interact when granting syndicated loans to firms. The tighter the interaction, the more likely it is that information is exchanged. We remain agnostic, however, regarding the identity of departments within the respective organizations from which the information is sent and received. While our proxy is based on interaction in the market for syndicated loans, its interpretation need not be confined to interactions involving only bankers from syndicated-loan or credit departments, as we show that our baseline findings hold up to using the international interbank market for the construction of our bank networks.

If one, nevertheless, wanted to assume that only bankers from syndicated-loan departments are involved in the transmission of private information across banks, then this would require information to be shared within banks—both from the M&A advisory to the lending unit of the advising bank, and from the lending to the trading unit of the bank receiving the information—in spite of firewalls in place. Evidence in Acharya and Johnson (2007) and Haselmann, Leuz, and Schreiber (2023), among others, lends support to this assumption, especially for universal banks (see Neuhann and Saidi, 2018), the prevalent type of financial institution in our German data.

3 Data and Empirical Strategy

3.1 Data Description

Our main data source covers all securities trading by German financial institutions, which are required to report each security transaction to the German Federal Financial Supervisory Authority (BaFin) in accordance with the Markets in Financial Instruments Directive (MiFID).⁴ One of the main purposes of the reporting requirement is to detect market manipulation and insider trading.⁵ The dataset contains information on the date, quantity, and price of a security traded by a given bank. In addition, we use bank-level balance-sheet data (covering, for instance, banks' total assets, capitalization, and asset composition) from BISTA⁶ (Gomolka, Schäfer, and Stahl, 2020).

We merge these data with information on international M&A deals from Securities Data Company (SDC) Platinum, including information on takeovers such as the announcement and effective date, the percentage of the target acquired and owned after the transaction, the price paid, the medium of exchange (in particular cash vs. stock), and the advisors on the target and the acquirer side. We complement the merged dataset with security-specific daily return data from Thomson Reuters Eikon. As a final ingredient, we use syndicated-loan data from DealScan to empirically capture the possibility for international information transmission. In particular, we construct an exposure variable based on joint lending activity of trading banks and deal-specific advisors based on the year prior to the announcement of a given takeover. Alternatively, we use transactions from interbank market data⁷ (MMSR) (Blaschke, Hirsch, and Yalcin-Roder, 2023), which are only available starting in 2016.

We restrict our sample to proprietary trading of stocks by banks—i.e., not on behalf of their (retail) clients—that are also active in the international syndicated-loan market. This leaves us with 37 German banks. The average bank in our sample has assets amounting to 81 billion €, of

⁴See <https://www.bundesbank.de/en/bundesbank/research/rdsc/research-data/mifid-617976>.

⁵BaFin reports 353 procedures of insider trading during the sample period from 2010 to 2016. About one-third of all positive investigations of insider trading relate to M&A transactions. As our data are anonymized, it is unfortunately impossible to link cases of insider trading detected by BaFin to banks' trading behavior in our study.

⁶Data ID: 10.12757/BBk.BISTA.99Q1-19Q4.01.01

⁷Data ID: 10.12757/BBk.mmsr.201607_202212.01.01

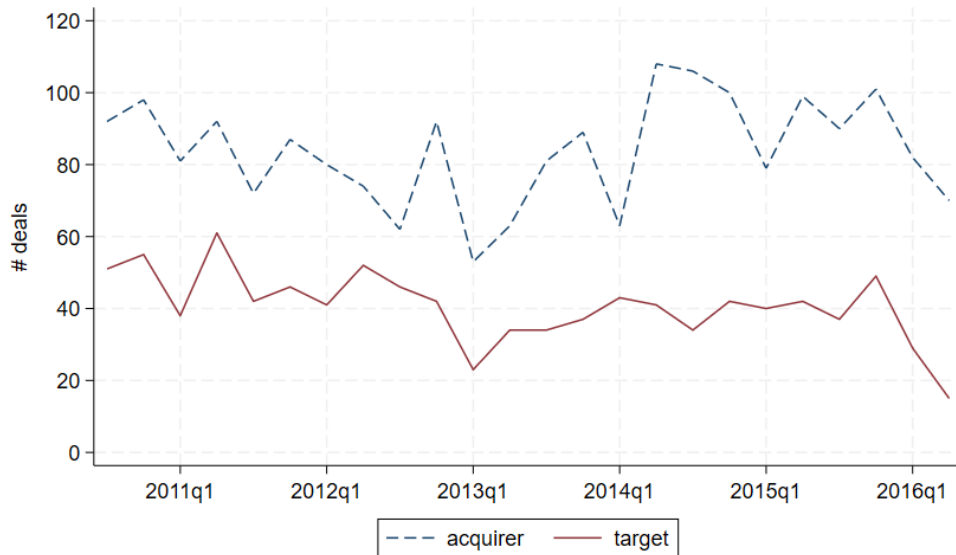


Figure 2: **Evolution of the Number of M&A Deals.** The figure shows the number of M&A deals in our sample between 2010 and 2016 with quarterly frequency. Deals are considered in the quarter of the announcement date. The red solid line represents the number of deals with information available on the target side, whereas the blue dashed line shows the number of deals with information available on the acquirer side.

which 5% are held in stocks, and an equity ratio of 10% (see Panel A of Table 1). More than half of these banks serve at least once themselves as an advisor in an M&A transaction during our sample period from 2010 to 2016. We exclude trading banks that are directly involved in takeovers as advisors, but analyze the trading behavior of target and acquirer advisors separately.

We focus on effective majority deals (>50% of shares and, thus, >50% of the target owned after the transaction) and exclude deals in the financial sector, leaving us with 3,052 M&A deals from 2010 to 2016 (Panel B of Table 1). Each deal can be viewed from the target or the acquirer side, data on which may not always be available. Target stocks have, on average, an announcement return (from one day before to one day after the announcement date) of 20%, the duration between effective and announcement dates is 112 days, and 56% are pure cash deals (Panel B1). Acquirer stocks yield, on average, only a very small announcement return of 1% (Panel B2). The distribution of M&A transactions over time and across countries is indicated in Figures 2 and 3, respectively. The coverage of M&A deals in our sample is fairly international (53 countries), with the majority of deals taking place in North America, Europe, Australia, and Japan.

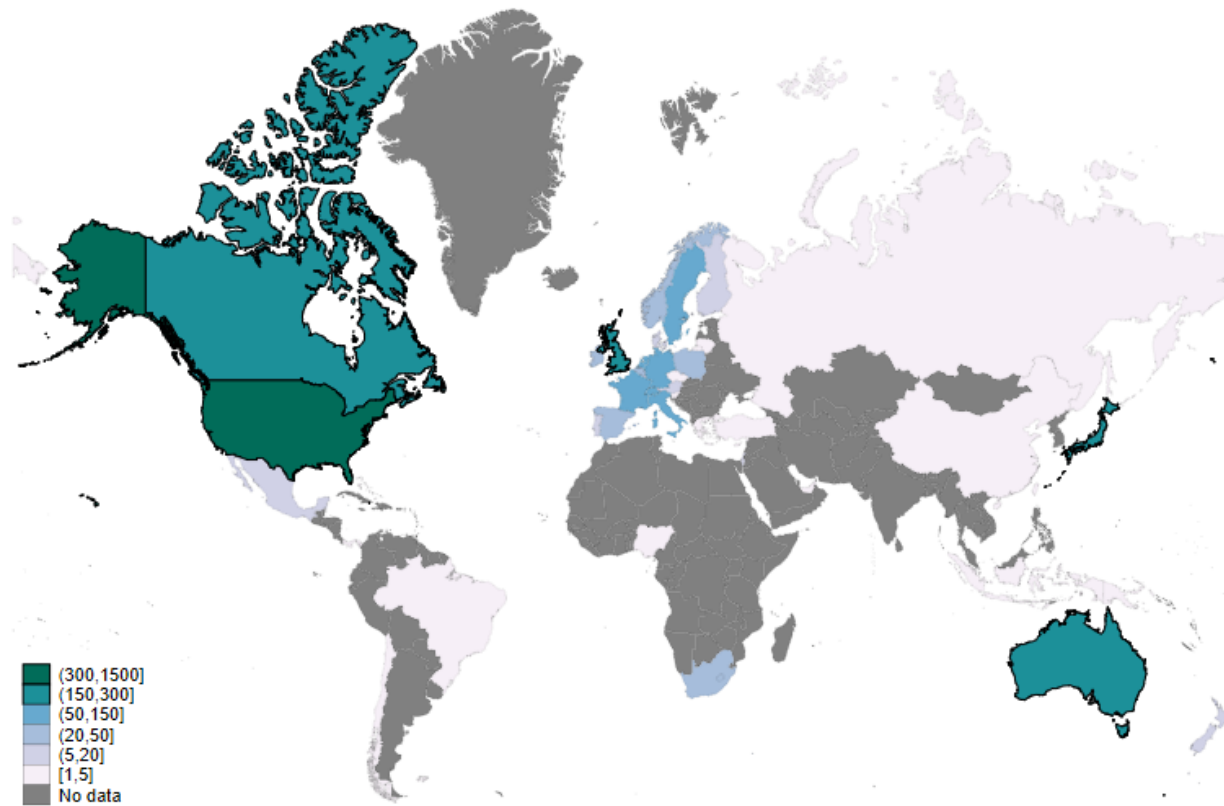


Figure 3: **Geographical Distribution of M&A Deals.** The figure visualizes M&A activity by country. The total number of deals in each country between 2010 and 2016 maps to the color indicated in the legend labels.

3.2 Empirical Specification

To test our main conjecture, we use data at the bank-security-date level and a symmetric time window of 30 days before and after a deal is announced. Descriptive statistics of the main dependent and explanatory variables are shown in Panel C of Table 1, separately for trading in target (Panel C1) and acquirer stocks (Panel C2). The number of observations depends on the number of target and acquirer stocks that the 37 German banks in our sample trade in during the 60-day window around the takeover announcement. On average, a bank trades in 286 stocks related to our M&A deals on ten trading days in the relevant time period.

Our explanatory variable of interest measures the intensity of a connection between a trading bank and a given deal's M&A advisor, namely by the number of joint syndicated loans scaled by the total number of syndicated loans granted by the advisor or the trading bank. Our measure thus captures the relative importance of the trading bank for the advisor's syndicated-loan business, or the other way around: $Intensity_{abt-1y}$ in the sense of advisor $a \rightarrow$ bank (trader) b is calculated as the number of joint syndicated loans by a and b relative to the number of syndicated loans by advisor a in the year prior to the deal announcement associated with security s .⁸ Importantly, although we analyze the trading behavior of German banks, we do capture their relationships to international advisors (396 in total), which are also active in the syndicated-loan market.

By leveraging syndicated-loan networks, we cast a wide net in capturing international information flows. Our connectedness measure serves as a proxy for active communication channels between banks. Our conjecture is not that banks communicate *solely* on the occasion of jointly syndicating loans but, rather, that frequent syndicated-lending activity is correlated with frequent communication more generally. To showcase the external validity of our findings with respect to the concrete communication channel, we consider the correlation between the syndicated-loan networks used for our connectedness measure and those formed in the international interbank market.

⁸In case of multiple advisor relationships maintained by a trading bank, we use the maximum for the same direction.

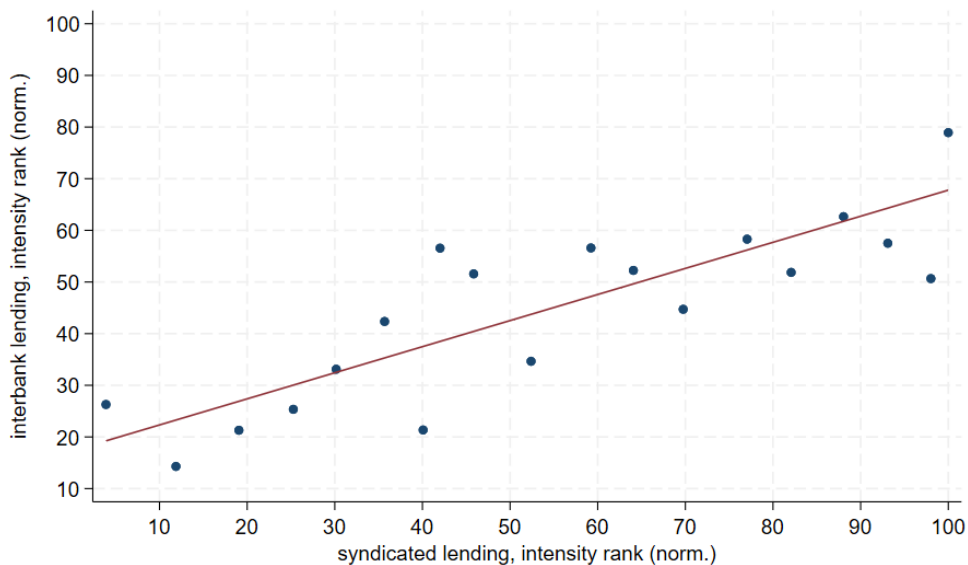


Figure 4: **External Validity of Connectedness Measure—Syndicated-loan vs. Interbank Networks.** The figure shows a binned scatter plot comparing relationship intensities based on the syndicated-loan network (x-axis) and the interbank network (y-axis). $Intensity_{ab}$ in the sense of bank (trader) $b \rightarrow$ (target/acquirer) advisor a is calculated as the number of joint/bilateral interbank transactions by a and b relative to the number of interbank transactions by German bank (trader) b in 2016. For the purpose of visualization, we rank intensities and normalize them by multiplying them with 100 divided by the maximum rank.

As we do not observe all interbank loans of all international banks, but only those involving German banks, we compute the respective connectedness measure based on the number of interbank loans between any two banks relative to the number of transactions by a given German bank. For the sake of comparability, we focus on international banks active in the interbank market that participate (in any capacity) in at least one syndicated loan and are connected to at least one German bank in our sample through an interbank loan. We also normalize the two connectedness measures. Figure 4 shows the resulting correlation in the last year of our sample period, 2016, which is closely aligned with the 45-degree line (the correlation is 0.52).

To assess whether a trading bank b that is more important for the syndicated-loan business of target advisor a acquires more stocks of the target s prior to an M&A announcement, we estimate

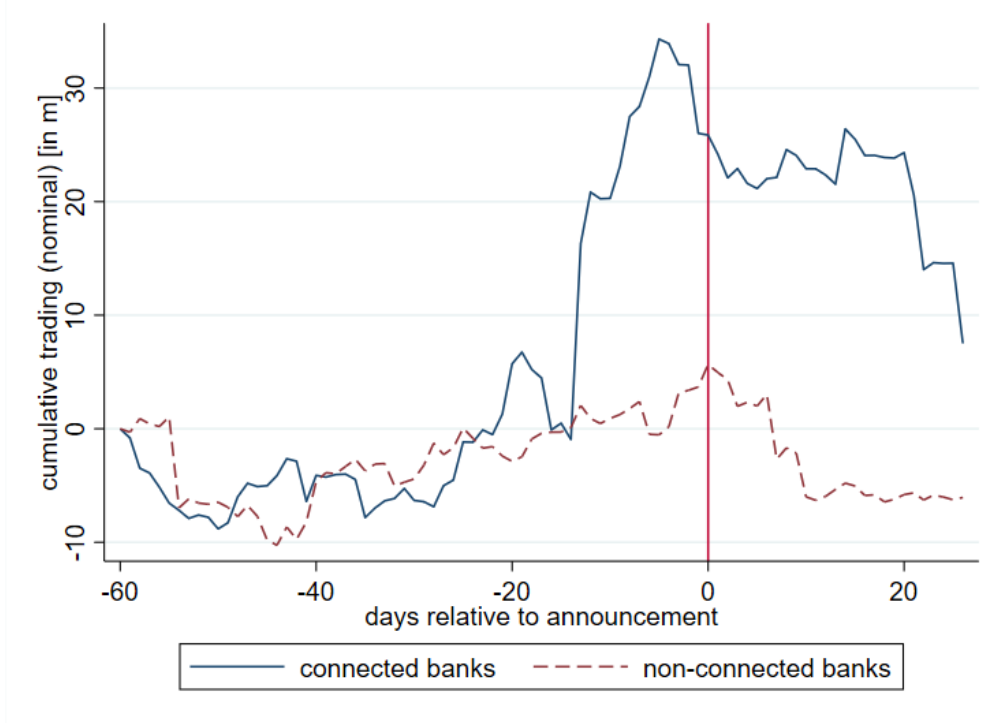


Figure 5: **Cumulative Nominal Trading (in m) in Target Stocks 60 days before and 30 days after the M&A Announcement.** Trading by connected banks refers to traders having joint syndicated-lending activity with at least one of the target advisors one year prior to the M&A announcement (solid blue line). Trading by non-connected banks is shown by the dashed red line.

the following specification:

$$\begin{aligned} \text{sgn}(\ln(|Net\ nominal_{bst}|)) = & \beta_1 Pre\text{-}Announcement30_{st} \times Intensity_{abt-1y} \\ & + \beta_2 Intensity_{abt-1y} + \theta_{st} + \mu_{bt} + \varepsilon_{bst}, \end{aligned} \quad (1)$$

where $\text{sgn}(\ln(|Net\ nominal_{bst}|))$ denotes the natural logarithm of the absolute value of the net nominal amount of stock s traded by bank b on date t , multiplied with the sign (+1 or -1) of the net nominal amount, $Intensity_{abt-1y}$ is the fraction of syndicated loans jointly issued by the target advisor a and bank b out of all syndicated loans of the target advisor a in the year prior to that associated with date t , $Pre\text{-}Announcement30_{st}$ is a dummy variable that is equal to 1 for the 30 days prior to the announcement of the takeover bid for the firm associated with stock s , and θ_{st} and μ_{bt} denote, respectively, security by date and bank by date fixed effects.

As a placebo test, we estimate the same specification for acquirer stocks. In addition, we can vary the direction of $Intensity_{abt-1y}$ by scaling the number of syndicated loans jointly issued by the target advisor a and bank b by the total number of syndicated loans of bank b . Finally, we can construct the same variable for acquirer advisors.

4 Main Results

We first analyze graphically the trading behavior of banks that differ in the degree to which they are connected to the advisor of the target firm in a given takeover. Figure 5 shows that connected traders start purchasing more target stocks roughly three weeks ahead of takeover announcements, potentially reflecting that they take advantage of private information they have accrued through their joint syndicated lending with the target advisor.

To substantiate this finding, Table 2 shows our results from estimating (1). Columns 1 and 2 report the results for regressions with less restrictive sets of fixed effects, while column 3 presents the results of our preferred baseline specification. The coefficient β_1 on our variable of interest is statistically highly significant irrespective of the set of fixed effects, and varies only slightly in size across specifications. A trading bank that is more connected to the target advisor by one standard deviation purchases, on average, $(0.1 \times 5.4 =)$ 54% more of the target stocks in the 30 days prior to the announcement. This lends support to the view that banks that are more important for the target advisor’s syndicated-loan business are more likely to obtain private information about the imminent announcement of the takeover bid. This allows the connected bank to buy target stocks and benefit from the substantive announcement effects.

In order to test whether this effect is specific to a trader’s connection with the target advisor, in column 4 we estimate whether the importance of a trader for the acquirer advisor’s syndicated-loan business can also explain the pre-announcement purchase of target stocks by the trader. When using the fraction of syndicated loans jointly issued by the acquirer advisor and the trading bank out of all syndicated loans of the acquirer advisor, we do not find a significant effect on pre-

announcement stock purchases of traders more connected to the acquirer advisor. This suggests that only traders connected to the target advisor obtain private information.

Using the reverse importance of the target advisor for the trader’s syndicated-loan business in column 5 yields similar results as before. In contrast, column 6 shows that traders that issued more syndicated loans with the acquirer advisor relative to the trader’s total syndicated lending do not buy more stocks of the target prior to the announcement of the takeover bid.⁹ This confirms that it is the connection to the target advisor that seems to matter for the diffusion of the insider information.

Since the announcement effect is much more emphasized for target stocks (Figure 1), traders would not benefit as much from any private information on an imminent takeover bid by purchasing stocks of the acquirer. In columns 7 and 8, we test whether connected traders purchase any acquirer stocks ahead of takeover announcements. We do not find any evidence of pre-announcement purchases of acquirer stocks by traders more connected to the target advisor (column 7) or by traders more important for the acquirer advisor’s syndicated-loan business (column 8).

Next, we estimate, instead of the net amount purchased by a specific trader, its propensity to buy the target or acquirer stock, i.e., the extensive margin. For this purpose, we replace the dependent variable in our regressions with a dummy variable, Buy_{bst} , indicating whether trading bank b net-purchased stock s on date t . The results in Table 3 are qualitatively similar those in Table 2: the propensity to purchase the target stock prior to the takeover bid significantly increases the more concentrated the target advisor’s syndicated-loan business is on joint deals with the respective trading bank.

This is again robust to including various sets of fixed effects (columns 1 to 3), going so far as to control for time-varying unobserved heterogeneity at both the trader and the security level. In terms of economic magnitude, a trader with a one standard deviation more intense connection with the target advisor has, on average, a 2.6 percentage points higher propensity to purchase

⁹This also suggests that central acquirer advisors’ information advantage (Yawson and Zhang, 2021) is not driving our results.

the target stock during the 30 days prior to the takeover announcement. As before, the pre-announcement propensity to purchase target stocks is only correlated with the connection to the target advisor (columns 1, 2, 3, and 5), but not the acquirer advisor (columns 4 and 6). We also do not find evidence that connected traders are any more likely to buy acquirer stocks prior to the announcement. This holds for connections to the target advisor as well as the acquirer advisor (columns 7 and 8).

Our identification strategy hinges on the fact that we distinguish trades in stocks associated with the same takeover events. While any recipient of private information regarding an imminent takeover would find it optimal to purchase the target, rather than the acquirer, stock, we consider whether banks are more likely to do so when they maintain closer connections to target advisors vs. acquirer advisors. Any such differential effect can be interpreted as evidence that advisors act in the best interest of their clients, and that the alignment of connected banks' trading motives with shareholder incentives is a prerequisite for the dissemination of private information about imminent takeover announcements.

To test this more directly, we estimate a horse race between trading banks' connections to the target vs. acquirer advisor. This also sheds light on whether the estimates in Tables 2 and 3 with respect to traders' connections to target advisors and acquirer advisors are only a mere result of the two being highly correlated, while connections to acquirer advisors are only more volatile.

In Table 4, we include the intensity of a trader's connection to the target advisor and to the acquirer advisor simultaneously, alongside the most restrictive set of fixed effects (as in columns 3/4 and 7/8 in Tables 2 and 3). The amount and propensity of a trader to buy target stocks before takeover announcements is only correlated with the intensity of its connection to the target advisor. The coefficient is still highly significant and even slightly larger in magnitude than before (columns 1 and 3). Conversely, there is no significant relationship between a bank's pre-announcement trading activity in a target stock and its connection to the acquirer advisor. Interestingly, when included in the joint estimation, the intensity of the trader's connection with the acquirer advisor now has a negative, albeit statistically insignificant, coefficient. This suggests

that when a trading bank is connected to both the target and the acquirer advisor, it is less likely to obtain private information, or is less inclined to trade upon it. Columns 2 and 4 report the respective results for the placebo tests on the amount and the propensity to purchase stocks of the acquirer firm. Again, the intensity of a given bank's connection to both the target and the acquirer advisor do not carry any significant effect on its trading in acquirer stocks.

In sum, these results support the view that target, rather than acquirer, advisors are more likely to disseminate information about an imminent takeover particularly to financial institutions with which they are closely connected in the syndicated-loan market. Their incentive to do so is strengthened by the fact that connected banks' trading motives are aligned with the incentives of the target shareholders, which they represent. Traders that are more connected to the target advisor only buy target stocks, as acquirer stocks do not benefit on average from a positive announcement effect. This indicates that traders acquire positions prior to takeover announcements in an attempt to exploit their private information and to reap trading profits from positive announcement effects.

5 Robustness Checks

We start out by addressing the quality of our connectedness measure as a proxy for frequent communication between banks. To bolster its external validity, we re-estimate the same specifications as in the previous Table 4, but using an interbank market-based connectedness measure (see Figure 4). The results in Table 5 preserve the insights from Table 4 in that only banks connected to the target advisor through interbank loans purchase target, but not acquirer, shares ahead of takeover announcements. These results also hold up to replacing the continuous (time-invariant) variable $Intensity_{ab}$ with a dummy variable that equals 1 for any non-zero value thereof (Table A1 in the Appendix).

To further assess the robustness and validity of our results for connected banks' trades in target stocks, we perform a battery of additional robustness checks, which are summarized in

Table 6. We first address potential concerns related to the fact that our trading data are confined to transactions of German banks only. German (universal) banks, however, maintain close ties to firms, i.e., they are represented on corporate boards and serve as relationship lenders. This might, in turn, imply that these banks may have at their disposal alternative sources of private information regarding takeovers of German firms. However, we fail to find a statistically significant difference in the coefficients on our variable of interest for German vs. non-German deals in column 1. This also suggests that cultural similarity or other aspects of familiarity (Guiso, Sapienza, and Zingales, 2009; Bereskin, Byun, Officer, and Oh, 2018), which are typically viewed as facilitating information transmission in social networks, are unlikely to drive our results.

While we control for all potential intercept effects of time-varying firm characteristics by including security by date fixed effects, it may still be possible that certain firm characteristics interact meaningfully with connected banks' trading, e.g., firm size. As one can see in column 2, connected banks' trading behavior does not vary for the top quartile of targets in terms of their market capitalization (captured by the dummy variable $Large_{st-1y}$).

Takeovers often affect certain industries and occur in waves. Banks may specialize in a certain industry and, as such, be in a better position to learn in advance about takeovers in this industry. At the same time, specialized banks might also be better connected to M&A advisors of deals in the same industry. To rule out that our results are confounded by trading banks' industry knowledge, we add $Industry\ share_{bst-1y}$, which is the industry exposure based on security s 's two-digit industry code relative to the total securities portfolio of trader b in the year prior to the deal announcement, and its interaction with $Pre-Announcement30_{st}$ in column 3. While we do find that "specialized" banks tend to buy more target shares, they are not more likely to do so in the 30 days prior to a takeover announcement, leaving our baseline effect virtually unaltered.

Alternatively, we can add interactions of trader by industry fixed effects with a dummy variable for a given merger's pre-announcement period (column 4), which control, among others, for a given trader's purchases of target stocks in a given industry prior to each takeover announcement. In column 5, we include even more granular trader by industry by date fixed effects

to ensure that our findings are not driven by developments in a bank's trading strategy across stocks within a given industry. Interestingly, while the effects of our main variable of interest remain highly significant in both cases, their economic magnitude increases with this even more restrictive set of fixed effects.

We next probe the robustness of our findings to the time horizon during which we measure a given bank's syndicated-loan network. Our estimates are similar irrespective of whether our intensity measure reflects joint syndicated loans of target advisors and traders in the past two (column 6) or three years (column 7), as opposed to our default of one year. As a consequence, our results also hold up to using an average over the past three years (column 8).

A related concern is that the intensity of the trading bank's connection to the target advisor may be, instead of a valid measure of private-information exchange, only a proxy for closer relationships that might involve institutional ties, such as the trader being the custodian bank or market maker for the advisor. To address this concern, we add to our baseline regression specification trader-advisor pair fixed effects. In this manner, we exploit only variation in the intensity of the trader's connection with the same target advisor over time. Interestingly, after including trader-advisor fixed effects, our key results do not only prevail, but the main effect is economically even more pronounced. Thus, our syndicated-loan based measure for banks' connectedness to target advisors is unlikely to explain their pre-announcement trading behavior through time-invariant aspects of their relationship. This renders it more likely that we, instead, capture (time-varying) information diffusion from the target advisor to connected banks.

In order to improve upon the external validity of our trader-time and security-time fixed effects—which are in our setup naturally estimated using only observed, and not, for instance, intended, transactions—we next re-estimate our regression specification also on an unrestricted sample that comprises all trades in every stock by each reporting bank (column 10). On this extended sample, we can also include trader-security fixed effects in our regressions (column 11). This allows us to control for instances in which banks serve as a market maker for the target stock and, as a consequence, hold inventory in this stock prior to the takeover announcement.

Again, our key result remains unaffected: even with this much larger sample and additional fixed effects, traders more closely connected to the target advisor through their syndicated-loan business purchase more target stocks prior to the takeover announcement. The economic magnitude is roughly similar to that of our baseline estimates.

Finally, we further probe whether it is indeed the connection of a trading bank to the target advisor that matters for the trader's pre-announcement target stock purchases, and whose relative importance matters more. For this purpose, we compute different measures for the intensity of the connection, varying the direction and type of advisor. First, we hold constant the (target or acquirer) advisor. For each type of advisor, we then re-define our intensity measure as the maximum of the fraction of syndicated loans jointly issued by the respective advisor and the trading bank out of all syndicated loans (i) of the advisor and (ii) of the trader. Second, we hold constant the direction of the intensity measure, and re-define the latter as the maximum of the syndicated-loan portfolio overlap between the trader and (i) the target advisor and (ii) the acquirer advisor, relative to the respective advisor's or the trader's total syndicated lending.

The results using these alternative measures for the connection intensity between traders and M&A advisors are remarkably similar to those of our baseline regressions. First of all, we use the maximum of all four before-mentioned intensity measures. Doing so, we find in column 1 of Table [A2](#) in the Appendix that the intensity in the syndicated-loan connection between a given trading bank and *any* advisor, irrespective of direction or type of advisor, matters for whether the trader purchases target stocks prior to the announcement. In the remaining columns, we use, in turn, the four concrete intensity measures. Columns 2 and 3 reveal that the trader's purchasing behavior is driven entirely by its connection to the target, rather than the acquirer, advisor. In addition, columns 4 and 5 suggest that the relative importance of the trader for the advisor's syndicated-loan business, rather than the other way around, is the more significant determinant for whether the connected bank trades on obtained private information. Therefore, the advisor's information transmission is—at least partly—incentivized by the trading bank's relative importance for the advisor's syndicated-loan business.

6 Variation in the Strength of Economic Incentives

If traders closely connected to a target advisor indeed buy target stocks pre announcement because they trade on private information obtained from the advisor, this effect should be more pronounced when expected profits from trading on private information are larger. This may be because in that case target advisors are more likely to share information about imminent takeovers, or connected traders are more inclined to purchase target stocks.

In testing this idea, we remain agnostic as to whether informed traders can anticipate which takeovers will have a particularly high announcement return, or whether the target advisor's transmitted information also involves information suggestive of the size of the deal premium. Instead of actual announcement returns for target stocks, we use parameters of takeovers that are more likely to be known by the trading bank and that are also correlated with announcement returns. In particular, target stocks see larger announcement returns following takeover bids made as cash offers. The underlying rationale—in line with the model of [Shleifer and Vishny \(2003\)](#) and empirical evidence ([Huang and Walkling, 1987](#); [Yook, 2003](#); [Malmendier, Opp, and Saidi, 2016](#))—is that acquirers are more likely to use cash, rather than stock, to pay for undervalued targets. As such, a cash bid reflects positive information about the target's stand-alone value.

Columns 1 and 2 in Table 7 present the results when we estimate our key specification for banks' trading in target stocks on a split sample for pure cash (column 1) and pure stock bids (column 2).¹⁰ Traders more closely connected to the target advisor purchase stocks of targets ahead of M&A transactions in cash (column 1), but not in stock (column 2). This is confirmed in columns 3 and 4 when incorporating the respective triple interaction effect in the pooled sample, even after accounting for time-varying unobserved heterogeneity at the trader level in column 4.

To provide further evidence that these trades are induced by private information pertaining to imminent takeovers, and not any other events, we dissect the pre-announcement period and study whether the stock purchases of connected traders are particularly pronounced closer to the

¹⁰As most deals have a cash structure, and for the sake of comparability across columns, we use a less restrictive fixed-effects structure so as to avoid having too few observations in column 2.

announcement date. Table 8 reports our regression results for banks' trading of target stocks, and considers only a 15-day (column 1), 30-day (column 2), 60-day (column 3), or 100-day (column 4) pre-announcement period. The comparison of the regression coefficients uncovers that the effect is economically substantially larger the shorter the definition of the pre-announcement period. This implies that closer to the announcement date connected traders' purchases of target stocks become increasingly prominent.

In column 5, we use in the same regression dummy variables defining disjoint time windows prior to the announcement, i.e., 100-61 days, 60-31 days, 30-16 days and 15-0 days before announcement, and interact those with the importance of the trader for the target advisors' syndicated-loan business. In line with our prior interpretation and conclusions drawn from Figure 5, we find that only in the 30 days prior to the announcement do connected traders purchase significantly more target stocks.

In columns 6 to 10, we estimate the same regression specifications for the extensive margin, i.e., traders' propensity to buy the target stock, and obtain similar results. The propensity to buy target stocks is elevated closer to the announcement date. Long before the announcement (100-31 days before) there is no evidence that traders that are more connected to the target advisor are more likely to purchase target stocks. These results are robust to replacing the continuous relationship measure $Intensity_{abt-1y}$ with a discrete version thereof that equals 1 for non-zero values (Table A3 in the Appendix). The effect—in terms of both statistical and economic significance—is concentrated in the 15 days prior to the announcement (see columns 5 and 10 of Table A3).

There exists empirical evidence that banks might exploit in their proprietary trading private information obtained from close relationships with their non-financial customers, even if it constitutes a violation of their fiduciary duties (as shown most recently by Haselmann, Leuz, and Schreiber, 2023). In our setting, this would correspond to advisors trading themselves on their private information about an imminent takeover. If this was the case, our results could reflect that connected traders only imitate advisors' trading behavior. In order to evaluate this possibility, in Table 9 we re-estimate regression specification (1) using, instead of the $Intensity_{abt-1y}$ measure,

a dummy variable identifying whether a trader b is at the same time also either a target advisor (columns 1 and 3) or acquirer advisor (columns 2 and 4) in the deal involving stock s as the target (columns 1 and 2) or the acquirer (columns 3 and 4). As the results show, neither acquirer nor target advisors boost their stock positions prior to takeover announcements, irrespective of whether we consider target or acquirer stocks.

In columns 1-4, we effectively compare the trading behavior of advisors with that of other traders that do not serve as advisors themselves but that might be closely connected to the respective advisors. If these connected traders only mimic the trading behavior of advisors (or trade on the same private information as the advisors), their trading behavior cannot serve as a control group to test whether advisors trade on private information. To address this concern, we restrict the sample to include only traders in the control group that are neither advisors in the deal nor connected to either one of the advisors (columns 5-8). Our results for the pre-announcement period remain robust in this restricted sample. After takeover announcements both target and acquirer advisors purchase more target shares, and acquirer advisors are less likely to buy acquirer shares than unconnected non-advisor banks.

Overall, these trading patterns suggest that target advisors disseminate the information about an imminent takeover announcement to their peers without exploiting the private information themselves. In Section 8, we further investigate why particularly the target advisors may have an incentive to share this private information.

Finally, we consider whether private information about imminent takeovers also diffuses further through connections to advisors of second order. More concretely, we test whether other German banks, unconnected to the advisors in a takeover (i.e., $Intensity_{abt-1y} = 0$ for them), trade similarly as do connected banks. For this purpose, we re-estimate the same specifications as in Table 4, and replace our connectedness measure with $Intensity_{cbt-1y}$, which captures the maximum degree of connectedness between bank b and any (target/acquirer) advisor-connected bank c . The results are in Table 10, and mirror exactly our original estimates, except that the magnitudes of the positive and significant coefficients reflect the fact that the banks b are not

connected at all to the advisors, so the average value of $Intensity_{cbt-1y}$ is much lower than that of $Intensity_{abt-1y}$, at 0.005 for connectedness to target advisor-connected banks (and 0.071 when conditioning on non-zero connectedness). This applies also to the standard deviation, but the implied economic significance of the estimates is even greater than that in Table 4. For instance, column 3 implies that a trader with a one standard deviation more intense connection with a bank connected to the target advisor has, on average, an $(0.032 \times 5.7 =)$ 18 percentage points higher propensity to purchase the target stock ahead of the takeover announcement.

That is, banks connected to target advisor-connected banks purchase target stocks, but not acquirer stocks, ahead of takeover announcements. In contrast, banks connected to acquirer advisor-connected banks do not engage in any such trading activity. This is consistent with the idea that banks connected to the acquirer advisor are privy to the private information because their incentives are not aligned with those of the acquirer shareholders.

7 Prices and Trading Gains

Figure 5, in conjunction with our baseline results, already suggests that traders closely connected to the target advisor buy more shares prior to the announcement and, thus, at a lower price. In order to more explicitly assess whether connected traders do pay less for target stocks than other traders, because they use the private information to time their purchases, we first calculate the volume-weighted average price a trader b pays for its purchases of stock s on date t . We then estimate a trader's daily purchase price of a target stock 30 days before and after the announcement as a function of its importance for the target advisor's syndicated-loan business, while using different sets of fixed effects and daily transaction controls at the stock by trader level sb (daily transaction volume and number of daily trades).

As our results in Table 11 show within the 60-day window around announcements, banks that are more connected to the target advisor pay significantly less when purchasing the target stock than do other traders. This finding not only holds when including security fixed effects (column

1), but also after adding trader fixed effects (column 2). The latter suggests that the trading gains earned by connected traders cannot be simply attributed to their time-invariant characteristics, e.g., their size, general degree of connectedness, or any particular trading style. Our results are also robust to the inclusion of year fixed effects (column 3), taking care of variation in annual market returns, and to using trader by year fixed effects (column 4), accounting for changes in a bank's general trading strategy (e.g., deleveraging) and access to information. This also precludes that our results are driven by time-varying characteristics of trading banks that may be correlated with their connections in the syndicated-loan market. Overall, a trader more connected by one standard deviation to the target advisor earns a trading gain of 0.67 € per share on its average daily trades of the target stock (based on column 2).

In the last column, we compare trades by banks in the same security and on the same day by adding security by date fixed effects. After doing so, our key variable of interest, the connection between the trader and the target advisor, is no longer a significant determinant of the price at which the trader purchases target stocks around the announcement date. This lends further support to our interpretation that connected traders only make a trading profit because their private information permits them to buy stocks before the announcement. When trading on the same day as other traders, connected traders do not manage to purchase target stocks at a lower price. This also highlights that connected traders are not generally (through their connection to the target advisor) in a position to reap trading gains in target stocks, e.g., by front-running elevated order flow around the announcement.

8 Advisors' Incentives

Reciprocal favors—e.g., in their syndicated-loan business—might be a motive for banks to disclose confidential M&A-related information to their business partners. This reasoning would hold for both acquirer as well as target advisors. Our previous findings suggest, however, that primarily target advisors reveal such private information to connected banks, and somewhat more so if the

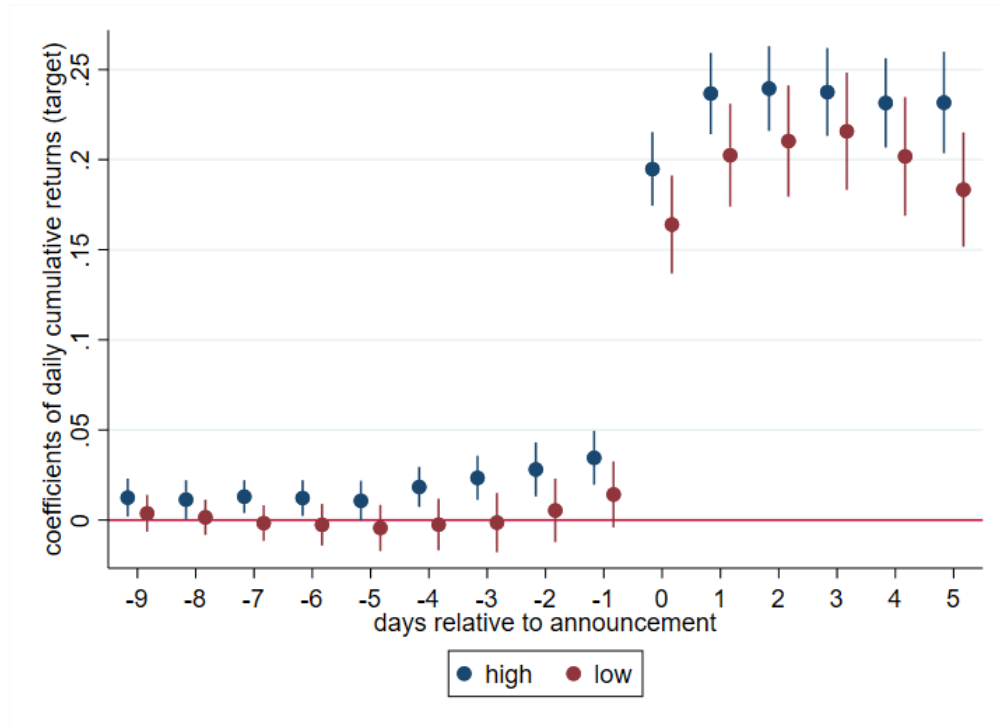


Figure 6: **Cumulative Returns of Target Stocks around Takeovers—High vs. Low Informed Trading Exposure.** The figure shows the point estimates and 95% confidence intervals for 9 days prior to the announcement and 5 days afterwards, based on the specification: $Return(cumulative)_{st} = \beta_t \sum_{t=-9}^5 Takeover_{st} + \delta_t + \gamma_s + \varepsilon_{st}$, estimated on a sample at the security-date level from 30 days prior to 5 days after the announcement, separately for targets with above-median vs. below-median values of $Informed\ Trading\ Exposure_d$. Standard errors are double-clustered at the security and date level.

connected banks are relatively more important for their syndicated-loan business (cf. column 4 vs. column 5 in Table A2).

This raises the question as to whether target advisors are particularly incentivized to share private information of an imminent takeover. One reason might be that sharing such private information with connected traders helps drive up the pre-announcement stock price of the target and, thus, also the final price paid. Given that target advisors' fee income is linked to the transaction value (see, among others, McLaughlin, 1990), this would boost target advisors' revenues.

As premia are deal-level outcomes, we move our analysis to the cross section of M&A deals (indexed by d) with information on the target side. In particular, we differentiate target stocks by the trading activity therein of German banks closely connected to the target advisor of the

respective deal. As syndicated-loan networks are international, but we only have trading data from German banks, it is a good possibility that other, non-German banks engage in similar trading behavior as they are also on the receiving end of the information being shared.

For all German banks in our data, we compute *Informed Trading Exposure_d*, which is the weighted sum of all of trading bank b 's net purchases of target stock s within a 60-day window prior to the announcement of deal d ($Trading_{bst}$) relative to the total absolute transactions (both purchases and sales) by any bank of target stock s in this period ($|Trading_{st}|$), all scaled by the market capitalization of stock s divided by 1,000.¹¹ For the weights we use the *Intensity_{aby-1}* of the connection between the trading bank b and the target advisor a , which is defined as the respective bank b 's number of joint syndicated loans with the target advisor in the year prior to the announcement (year $y - 1$) relative to the total number of syndicated loans granted by the target advisor in the same period:

$$Informed\ Trading\ Exposure_d = \frac{\sum_b \sum_{t \in T(60)} Intensity_{aby-1} \times Trading_{bst}}{\sum_{t \in T(60)} |Trading_{st}|} \bigg/ \frac{MarketCap_s}{1,000}.$$

In Figure 6, we decompose the observed runup in targets' stock prices ahead of takeover announcements (see Figure 1) for targets with above-median vs. below-median values of *Informed Trading Exposure_d*. Doing so, we find that not only is the runup more pronounced for targets whose stocks are traded more actively by banks closely connected to the target advisor, but also the level of post-announcement returns.

To test whether this also translates into higher deal premia, we estimate the relationship between the 60-day premium paid and the relative trading volume in the target stock by banks connected to the target advisor. More precisely, we use the premium paid for deal d , *Premium_d*, defined as

$$Premium_d = \frac{Price\ Paid_{st} - Price_{st-60}}{Price_{st-60}},$$

and regress it on *Informed Trading Exposure_d*.

¹¹*Informed Trading Exposure_d* is winsorized at -1 and 1.

Since our previous analysis has revealed that most of the transactions of informed traders occur 15 to 30 days before the announcement (Table 8), we hypothesize that the price 60 days before the announcement is not significantly affected by information transmission. Hence, if the dissemination of private information about an imminent merger indeed drives up the price paid, this should be captured by a higher 60-day premium paid.

The final sample consists of M&A deals between 2010 and 2016. Descriptive statistics of the main dependent and explanatory variables are shown in Panel D of Table 1. For our cross-sectional analysis, the sample of target deals contains 538 takeovers of which 83% are effective and 11% are labeled as competing offers (4% in the sample of effective deals). For effective deals, we require available information on the price paid, and consider only deals with a premium between -20% and 200% (motivated by Officer, 2003, and in line with Hackbarth and Morellec, 2008).¹²

Table 12 summarizes our regression results. As the trading volume of connected traders could also be elevated simply because there are (already) announced competing offers for the target, inducing banks to buy the target stock without having private information, we always include an indicator variable, *Competing Offer_{it}*, which equals 1 in case we record more than one bid per target security within one year.

In column 1, we control for year fixed effects, which capture aggregate trends in premia paid over time, as well as the target's industry by country fixed effects, and find a positive correlation between the premium and the transaction volume of traders closely connected to the target advisor. This suggests that by disseminating information about an imminent merger to connected traders, the target advisor can help achieve a higher premium. This estimate increases only further after including time-invariant (column 2) and time-varying fixed effects for the target's advisor (column 3), as well as time-varying fixed effects for the target's industry-country combination (column 4). This precludes that our results simply reflect merger waves in certain industries, or that they are a mere artefact of certain advisors gaining market share or other particular expertise

¹²By requiring information on the premium the number of deals in the sample for cross-sectional analyses is lower compared to the sample in the main analyses (see Table 1). Table A4 in the Appendix shows that our main results are robust to restricting the sample to deals with available premia information.

at driving up deal premia.

Our estimates are not only statistically but also economically significant. For example, the estimate in column 4 implies that a one-standard-deviation increase in *Informed Trading Exposure_d* is associated with a $0.352 \times 0.12 = 4.2$ percentage points higher premium paid, which corresponds to approximately one-quarter of the latter's sample mean. The economic magnitude of this effect strongly suggests that it does not result solely from connected German banks' trades, but that our analysis may also apply to other, non-German banks connected to the target advisor.

The deal premium, measured as the percentage increase of the price paid over the target stock price 60 days prior to the announcement, is the sum of the initial runup up until the day prior to the announcement and the subsequent markup. While our results in Table 12 imply that informed trading exposure is associated with higher premia, it does not reflect to what extent the effect stems from runups in target stocks due to connected banks' trades (cf. Figure 6).

To investigate this, in the first four columns of Table 13 we re-estimate the same specifications as in Table 12, but replace the dependent variable with *Runup_d*, the return from 60 days prior to the announcement to one day prior to the announcement. The estimates tend to be close to those in Table 12, but also exhibit some variation. As the premium can be decomposed into a runup and a markup component, i.e., $Premium_d = Runup_d + Markup_d$, our results imply that a large portion of the effect on premia is driven by higher runups rather than markups.

While higher premia stemming primarily from higher runups would be in the interest of target advisors, the latter's incentives to share information about imminent M&A announcements with connected banks would be reduced if by raising the premium, such informed trading led acquirers to postpone or cancel planned bids (as discussed in Schwert, 1996). Under the so-called markup pricing hypothesis, whereby the runup is an added cost to the bidder and, thus, induces a lower deal success probability, the coefficient on the runup is equal to zero (one) in a regression with the markup (premium) as the dependent variable. Using U.S. deals, Schwert (1996) presents evidence in favor of the markup pricing hypothesis, while Betton, Eckbo, Thompson, and Thorburn (2014), using more recent data and modified tests, firmly reject it.

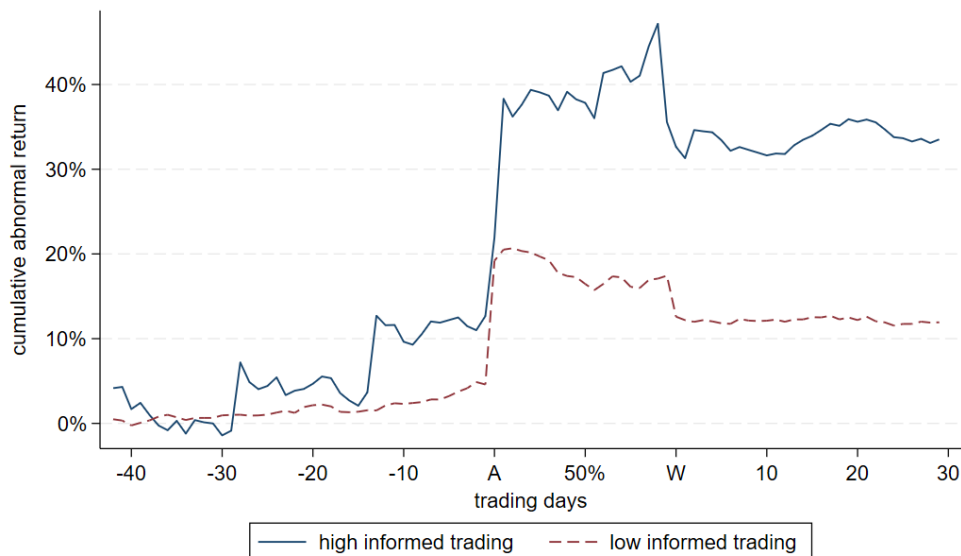


Figure 7: **Cumulative Abnormal Returns of Target Stocks in Failed Takeovers—High vs. Low Informed Trading Exposure.** The figure shows cumulative abnormal returns for 42 trading days prior to the announcement and 30 trading days after the withdrawal of the takeover bid, separately for targets with above-median vs. below-median values of *Informed Trading Exposure_d*. For the illustration of the period between announcement (A) and withdrawal (W), we normalize trading days (in percent) to accommodate different durations of the interim period. We calculate cumulative abnormal returns as $CAR_{st} = \sum_{j=1}^t (r_{sj} - r_{mj})$, where r_{sj} and r_{mj} denote the stock return of security s and the Thomson Reuters global stock benchmark on date j , respectively.

To test the markup pricing hypothesis in our sample, we use as the dependent variable in the last four columns of Table 13 *Markup_d*, the return implied by the price paid compared to the stock price one day prior to the announcement, and regress it on *Runup_d*. All estimates are significantly different from zero, thereby rejecting the markup pricing hypothesis. Our estimates from a drastically different sample fall between those of Schwert (1996) and Betton, Eckbo, Thompson, and Thorburn (2014). They range from -0.36 to -0.57, which suggests that the higher runup is only partially offset by a lower markup and, thus, increases the total premium paid by the acquirer only as a fraction of the size of the runup (partial substitution).

Consistent with our rejection of the markup pricing hypothesis, elevated trading activity of banks that are connected to the target advisor should not adversely affect the probability that a takeover is successful. To test this, we estimate a linear probability model on the sample of

all successful *and* failed bids. We use the same regression specification as before, but replace the dependent variable with an indicator variable for a successful bid. As the results in Table 14 highlight, greater trading activity by connected and, thus, presumably better informed traders has no statistically significant effect on the probability that a takeover is completed.

Trading by connected—and, thus, better informed—banks is associated with higher pre-bid runups that are not offset by equal reductions in the markups and, therefore, translate into higher premia without reducing the success probability of the takeover. This suggests that target advisors can increase their expected revenues by sharing information about imminent M&A announcements with connected banks.

As such, both the target and its advisor benefit from a successfully executed takeover. Banks connected to the target advisor benefit as well, regardless of whether a takeover bid is successful or not. Based on our relatively small sample of 90 failed takeovers, Figure 7 shows that target stocks traded by connected banks see a much higher cumulative abnormal return (CAR) not only at announcement but also (at least 30 trading days) after the deal fails.

According to Malmendier, Opp, and Saidi (2016), positive post-failure CARs reflect previous undervaluation of the target stock (or a higher probability of becoming a target again) and are prominent among cash, rather than stock, bids. In combination with our finding that banks closely connected to the target advisor are particularly prone to purchasing shares of targets of cash bids (see Table 7), Figure 7 implies that connected banks tend to trade in undervalued stocks. Given the generally strong financial incentive to purchase target stocks ahead of takeover announcements (see Figure 1), weakening the role for connected banks' otherwise-acquired private information, this suggests that target advisors share information about imminent takeovers especially for targets they know to be undervalued.

Finally, a back-of-the-envelope calculation allows us to quantify the benefits accruing to the target advisor and its connected banks alike. In particular, the target advisor's compensation will be tied to the total amount paid by the acquirer. We use the Lehman scale¹³ for this purpose,

¹³See https://seekingalpha.com/uploads/2016/11/22/4935640/M_A_Fees_Survey____Firmex__1_.pdf.

and multiply it with the target's market capitalization at the end of the year prior to the takeover and 4.2%, which corresponds to the increase in the offer premium in response to a one-standard-deviation increase in *Informed Trading Exposure_d* (as mentioned above). This translates into a profit of 1,156,655 € per deal. Assuming that advisors accompany one such deal per month, their revenue increase adds up to 0.13% of the median capital of the German banks in our sample.

While this does not constitute a substantial increase in bank profits, the order of magnitude suggests that target advisors' information transmission to connected banks is unlikely to be detected as a breach of fiduciary duties. This is consistent with our finding that they do not trade on their private information themselves, which would be associated with much greater risk of being caught, and more generally with evidence that insiders trade less aggressively in the face of legal risk (Kacperczyk and Pagnotta, 2023).

Turning to the connected banks, defined as banks with a non-zero degree of connectedness to the target advisor, we consider their cumulative position in the target stock resulting from their trades during the 30-day window prior to deal announcement. Based on all deals with both connected and unconnected German banks trading in the target stock, and using the return given by the stock price 30 days prior to announcement and the final price paid by the acquirer,¹⁴ they collectively earn 172,320 € per deal. This suggests that the target advisor benefits more from the economic consequences of connected banks' trades than they do, but more importantly, the target shareholders who receive a higher premium are by far the primary beneficiaries.

The relatively minute trading profits of connected banks attests to the fact that the observed target-price movement can only be justified by other German banks trading similarly, for which we have provided evidence in Table 10. It furthermore suggests that other, non-German (i.e., international) banks connected to the target advisor engage in similar trading behavior as well.

¹⁴This assumption can be relaxed by using the precise timing of each connected bank's trades.

9 Conclusion

In this paper, we provide evidence that M&A advisors share private information about imminent takeovers to closely connected banks. We uncover these connections using the network of banks in the international syndicated-loan market. Although any advisor could benefit from leveraging its private information, we show that they only do so when the incentives of connected banks are aligned with those of the shareholders. As a result, only target, rather than acquirer, advisors share the information with connected banks that purchase target stocks before the announcement and, thus, at lower prices. The additional pre-announcement demand drives up the pre-announcement price and thereby contributes to a higher premium paid, without sacrificing the probability of a successful takeover bid.

Information transmission benefits target shareholders and ultimately the target advisor, reflecting the idea that bank networks aid the establishment of mutually beneficial relations. Connected banks' trading profits will likely contribute to the stability of reciprocal exchange in loan-syndication networks, which we use to capture private-information flows. As such, our results suggest that loan-syndication networks can use profitable private-information transmission in other markets to enforce repeated interaction in syndication, where banks take turns in arranging syndicated loans and former lead arrangers make sure to be invited as participants in the next iteration. Such a mechanism potentially informs theories of how firms' decision to syndicate with other firms sustains collusion even at low levels of market concentration ([Hatfield, Kominers, Lowery, and Barry, 2020](#)).

References

- ACHARYA, V., AND T. JOHNSON (2007): “Insider Trading in Credit Derivatives,” *Journal of Financial Economics*, 84(1), 110–141.
- ADDOUM, J. M., AND J. R. MURFIN (2020): “Equity Price Discovery with Informed Private Debt,” *Review of Financial Studies*, 33(8), 3766–3803.
- AHERN, K. R. (2017): “Information Networks: Evidence from Illegal Insider Trading Tips,” *Journal of Financial Economics*, 125, 26–47.
- ALI, U., AND D. HIRSHLEIFER (2017): “Opportunism as a Firm and Managerial Trait: Predicting Insider Trading Profits and Misconduct,” *Journal of Financial Economics*, 126(3), 490–515.
- ANTIĆ, N., AND N. PERSICO (2017): “Communication between Shareholders,” *Northwestern University Working Paper*.
- (2020): “Cheap Talk with Endogenous Conflict of Interest,” *Econometrica*, 88(6), 2663–2695.
- ASKER, J., AND A. LJUNGQVIST (2010): “Competition and the Structure of Vertical Relationships in Capital Markets,” *Journal of Political Economy*, 118(3), 599–647.
- AUGUSTIN, P., M. BRENNER, AND M. G. SUBRAHMANYAM (2019): “Informed Options Trading Prior to Takeover Announcements: Insider Trading?,” *Management Science*, 65(12), 5697–5720.
- BAILEY, M., R. CAO, T. KUCHLER, J. STROEBEL, AND A. WONG (2018): “Social Connectedness: Measurement, Determinants, and Effects,” *Journal of Economic Perspectives*, 32(3), 259–280.
- BAILEY, M., A. GUPTA, S. HILLENBRAND, T. KUCHLER, R. RICHMOND, AND J. STROEBEL (2021): “International Trade and Social Connectedness,” *Journal of International Economics*, 129, 103418.
- BARBON, A., M. DI MAGGIO, F. FRANZONI, AND A. LANDIER (2019): “Brokers and Order Flow Leakage: Evidence from Fire Sales,” *Journal of Finance*, 74(6), 2707–2749.

- BERESKIN, F., S. K. BYUN, M. S. OFFICER, AND J.-M. OH (2018): “The Effect of Cultural Similarity on Mergers and Acquisitions: Evidence from Corporate Social Responsibility,” *Journal of Financial and Quantitative Analysis*, 53(5), 1995–2039.
- BETTON, S., B. E. ECKBO, R. THOMPSON, AND K. S. THORBURN (2014): “Merger Negotiations with Stock Market Feedback,” *Journal of Finance*, 69(4), 1705–1745.
- BLASCHKE, J., C. HIRSCH, AND E. YALCIN-RODER (2023): “Money Market Statistical Reporting (German Part) (MMSR), Data Report 2023-13 – Metadata Version MMSR-Data-Doc-v4-0,” *Deutsche Bundesbank, Research Data and Service Centre*.
- BODNARUK, A., M. MASSA, AND A. SIMONOV (2009): “Investment Banks as Insiders and the Market for Corporate Control,” *Review of Financial Studies*, 22(12), 4989–5026.
- BOOT, A. (2000): “Relationship Banking: What Do We Know?,” *Journal of Financial Intermediation*, 9(1), 7–25.
- BRADLEY, D., R. JAME, AND J. WILLIAMS (2022): “Non-Deal Roadshows, Informed Trading, and Analyst Conflicts of Interest,” *Journal of Finance*, 77(1), 265–315.
- BUSHMAN, R. M., A. J. SMITH, AND R. WITTENBERG-MOERMAN (2010): “Price Discovery and Dissemination of Private Information by Loan Syndicate Participants,” *Journal of Accounting Research*, 48(5), 921–972.
- CAI, Y., AND M. SEVILIR (2012): “Board Connections and M&A Transactions,” *Journal of Financial Economics*, 103(2), 327–349.
- CHAGUE, F. D., B. GIOVANNETTI, AND B. HERSKOVIC (2023): “Information Leakage from Short Sellers,” *NBER Working Paper No. 31927*.
- COHEN, L., A. FRAZZINI, AND C. MALLOY (2008): “The Small World of Investing: Board Connections and Mutual Fund Returns,” *Journal of Political Economy*, 116(5), 951–979.

- COLOMBO, M., L. GRIGOLON, AND E. TARANTINO (2021): “Credit Conditions When Lenders Are Commonly Owned,” *CRC TR 224 Discussion Paper No. 279*.
- CRAWFORD, V. P., AND J. SOBEL (1982): “Strategic Information Transmission,” *Econometrica*, 50(6), 1431–1451.
- DAI, R., N. MASSOUD, D. K. NANDY, AND A. SAUNDERS (2017): “Hedge Funds in M&A Deals: Is there Exploitation of Insider Information?,” *Journal of Corporate Finance*, 47, 23–45.
- EGAN, M., G. MATVOS, AND A. SERU (2019): “The Market for Financial Adviser Misconduct,” *Journal of Political Economy*, 127(1), 233–295.
- FICH, E. M., V. LANTUSHENKO, AND C. SIALM (2020): “Institutional Trading Around M&A Announcements,” *UT Austin Working Paper*.
- GOMOLKA, M., M. SCHÄFER, AND H. STAHL (2020): “Monthly Balance Sheet Statistics (BISTA), Data Report 2020-04 – Metadata Version BISTA-Doc-v2-0,” *Deutsche Bundesbank, Research Data and Service Centre*.
- GRIFFIN, J. M., AND S. KRUGER (2024): “What is Forensic Finance?,” *UT Austin Working Paper*.
- GRIFFIN, J. M., T. SHU, AND S. TOPALOGLU (2012): “Examining the Dark Side of Financial Markets: Do Institutions Trade on Information from Investment Bank Connections?,” *Review of Financial Studies*, 25(7), 2155–2188.
- GUIISO, L., P. SAPIENZA, AND L. ZINGALES (2009): “Cultural Biases in Economic Exchange?,” *Quarterly Journal of Economics*, 124(3), 1095–1131.
- HACKBARTH, D., AND E. MORELLEC (2008): “Stock Returns in Mergers and Acquisitions,” *Journal of Finance*, 63(3), 1213–1252.
- HASELMANN, R. F., C. LEUZ, AND S. SCHREIBER (2023): “Know Your Customer: Informed Trading by Banks,” *Center for Financial Studies Working Paper No. 705*.

- HATFIELD, J. W., S. D. KOMINERS, R. LOWERY, AND J. M. BARRY (2020): “Collusion in Markets with Syndication,” *Journal of Political Economy*, 128(10), 3779–3819.
- HERSKOVIC, B., AND J. RAMOS (2020): “Acquiring Information through Peers,” *American Economic Review*, 110(7), 2128–2152.
- HUANG, Y.-S., AND R. A. WALKLING (1987): “Target Abnormal Returns Associated With Acquisition Announcements: Payment, Acquisition Form, and Managerial Resistance,” *Journal of Financial Economics*, 19(2), 329–349.
- IVASHINA, V., AND Z. SUN (2011): “Institutional Stock Trading on Loan Market Information,” *Journal of Financial Economics*, 100(2), 284–303.
- JAGOLINZER, A. D., D. F. LARCKER, G. ORMAZABAL, AND D. J. TAYLOR (2020): “Political Connections and the Informativeness of Insider Trades,” *Journal of Finance*, 75(4), 1833–1876.
- JEGADEESH, N., AND Y. TANG (2010): “Institutional Trades Around Takeover Announcements: Skill vs. Inside Information,” *Emory University Working Paper*.
- JENTER, D. (2005): “Market Timing and Managerial Portfolio Decisions,” *Journal of Finance*, 60(4), 1903–1949.
- KACPERCZYK, M. T., AND E. S. PAGNOTTA (2023): “Legal Risk and Insider Trading,” *Journal of Finance*, forthcoming.
- KRANTON, R., AND D. MCADAMS (2022): “Social Connectedness and Information Markets,” *American Economic Journal: Microeconomics*, forthcoming.
- KUCHLER, T., AND J. STROEBEL (2021): “Social Finance,” *Annual Review of Financial Economics*, 13(1), 37–55.
- LEISTER, C. M., Y. ZENOU, AND J. ZHOU (2021): “Social Connectedness and Local Contagion,” *Review of Economic Studies*, 89(1), 372–410.

- LOWRY, M., M. ROSSI, AND Z. ZHU (2019): “Informed Trading by Advisor Banks: Evidence from Options Holdings,” *Review of Financial Studies*, 32(2), 605–645.
- MALMENDIER, U., M. M. OPP, AND F. SAIDI (2016): “Target Revaluation after Failed Takeover Attempts: Cash versus Stock,” *Journal of Financial Economics*, 119(1), 92–106.
- MCLAUGHLIN, R. M. (1990): “Investment-Banking Contracts in Tender Offers: An Empirical Analysis,” *Journal of Financial Economics*, 28(1), 209–232.
- MEULBROEK, L. K. (1992): “An Empirical Analysis of Illegal Insider Trading,” *Journal of Finance*, 47(5), 1661–1699.
- MOONEY, T. (2022): “Pre-Announcement Merger Trading by Investment Bank-Affiliated Mutual Funds,” *Managerial Finance*, 48(7), 1069–1085.
- MORRISON, A. D., AND W. J. WILHELM (2007): *Investment Banking: Institutions, Politics, and Law*. Oxford University Press.
- NEUHANN, D., AND F. SAIDI (2018): “Do Universal Banks Finance Riskier But More Productive Firms?,” *Journal of Financial Economics*, 128(1), 66–85.
- OFFICER, M. S. (2003): “Termination Fees in Mergers and Acquisitions,” *Journal of Financial Economics*, 69(3), 431–467.
- PURI, M. (1996): “Commercial Banks in Investment Banking: Conflict of Interest or Certification Role?,” *Journal of Financial Economics*, 40(3), 373–401.
- REHBEIN, O., AND S. C. ROTHER (2022): “Social Connectedness (and Distance) in Bank Lending,” *Copenhagen Business School Working Paper*.
- SCHWERT, G. (1996): “Markup Pricing in Mergers and Acquisitions,” *Journal of Financial Economics*, 41(2), 153–192.

- SHLEIFER, A., AND R. W. VISHNY (2003): “Stock Market Driven Acquisitions,” *Journal of Financial Economics*, 70(3), 295–311.
- SUK, I., AND M. WANG (2021): “Does Target Firm Insider Trading Signal the Target’s Synergy Potential in Mergers and Acquisitions?,” *Journal of Financial Economics*, 142(3), 1155–1185.
- VOSS, P., AND M. KULMS (2022): “Separating Ownership and Information,” *American Economic Review*, 112(9), 3039–3062.
- YAWSON, A., AND H. ZHANG (2021): “Central Hub MA Advisors,” *Review of Finance*, 25(6), 1817–1857.
- YOOK, K. C. (2003): “Larger Return to Cash Acquisitions: Signaling Effect or Leverage Effect?,” *Journal of Business*, 76(3), 477–498.

Tables

Table 1: **Summary Statistics:** Panel A presents summary statistics at the bank level, for all German banks with a trading book that are also active in syndicated lending. Panel B presents summary statistics at the M&A deal level, separately for the target (Panel B1) and the acquirer side (Panel B2). Panel C presents summary statistics at the bank-security-date level based on the main regression sample covering 30 days before and after the announcement of a takeover. Panel C1 refers to trading in target securities, and Panel C2 refers to trading in acquirer securities. Panel D presents summary statistics for variables used in our cross-sectional analysis at the deal level.

Panel A: Bank level					
	Mean	SD	p25	p75	N
Total assets (in € bn)	81.37	122.10	3.36	115.74	37
Equity/Assets	.10	.16	.04	.06	37
Stocks/Assets	.05	.07	.01	.06	37
Advisor activity (in SDC)	.59	.50	0	1	37
Panel B1: Deal level (Target)					
	Mean	SD	p10	p90	N
Announcement return [-1,+1]	.20	.24	-.02	.52	963
Length (effective - announcement)	111.81	90.72	30	224	995
Cash bid (pure)	.56	.50	0	1	995
Stock bid (pure)	.12	.33	0	1	995
German deal	.04	.18	0	0	995
U.S. deal	.44	.50	0	1	995
Panel B2: Deal level (Acquirer)					
	Mean	SD	p10	p90	N
Announcement return [-1,+1]	.01	.07	-.04	.07	1,956
Length (effective - announcement)	74.29	98.51	0	176	2,057
Cash bid (pure)	.42	.49	0	1	2,057
Stock bid (pure)	.06	.25	0	0	2,057
German deal	.03	.18	0	0	2,057
U.S. deal	.45	.50	0	1	2,057
Panel C1: Trading level (Target)					
	Mean	SD	p10	p90	N
sgn(ln(Net nominal))	.29	7.44	-9.13	9.21	21,065
Buy (1 if net nominal > 0, else 0)	.49	.50	0	1	21,781
Intensity (Target Adv → Trader)	.05	.10	0	.15	21,781
Intensity (Acquirer Adv → Trader)	.04	.10	0	.15	21,781
Intensity (Trader → Target Adv)	.07	.13	0	.29	21,781
Intensity (Trader → Acquirer Adv)	.08	.14	0	.32	21,781
Panel C2: Trading level (Acquirer)					
	Mean	SD	p10	p90	N
sgn(ln(Net nominal))	.16	7.19	-8.84	8.93	79,278
Buy (1 if net nominal > 0, else 0)	.48	.50	0	1	81,583
Intensity (Target Adv → Trader)	.04	.10	0	.14	81,583
Intensity (Acquirer Adv → Trader)	.03	.09	0	.13	81,583
Intensity (Trader → Target Adv)	.05	.11	0	.25	81,583
Intensity (Trader → Acquirer Adv)	.05	.12	0	.27	81,583
Panel D: Cross section (Target)					
	Mean	SD	p10	p90	N
Premium (if Effective = 1)	.17	.31	-.12	.53	448
Runup (if Effective = 1)	.10	.22	-.11	.33	448
Markup (if Effective = 1)	.08	.32	-.19	.38	448
Informed trading exposure (if Effective = 1)	0	.12	-.01	.04	448
Competing offer (if Effective = 1)	.04	.21	0	0	448
Effective	.83	.37	0	1	538
Informed trading exposure	0	.11	-.01	.03	538
Competing offer	.11	.31	0	1	538

Table 2: Effect of Bank Connectedness to Advisor on Stock Trading: The sample is a panel at the bank (trader) - security - date level bst from 2010 to 2016, i.e., security s traded by bank b at date t with daily frequency. It contains trading in securities 30 days before and after an M&A announcement of the given security. $Pre\text{-}Announcement30_{st}$ equals 1 for days within 30 days prior to an M&A announcement of security s , and 0 otherwise. $Intensity_{abt-1y}$ in the sense of advisor $a \rightarrow$ bank (trader) b is calculated as the number of joint syndicated loans by a and b relative to the number of syndicated loans by advisor a in the year prior to the deal announcement of security s . The dependent variable is $\text{sgn}(\ln(|Net\ nominal_{bst}|))$. For positive net nominal amounts, it is calculated as the natural logarithm of the net nominal traded by bank b in security s at date t . For negative net nominal amounts, the natural logarithm is calculated for the absolute value and then multiplied by -1. Specifications vary by their focus on target stocks (T) [columns 1-6]/acquirer stocks (A) [columns 7-8], $Intensity_{abt-1y}$ (type of advisor and direction), and fixed effects. Standard errors are double-clustered at the bank (trader) and security level.

$\text{sgn}(\ln(Net\ nominal_{bst}))$	(1)	(2)	(3)	(4)	(5)	(6)	(7)	(8)
$Pre\text{-}Announcement30_{st} \times Intensity_{abt-1y}$	5.536*** (4.50)	4.972*** (3.62)	5.386*** (3.27)	3.061 (1.32)	5.363** (2.54)	2.303 (1.30)	0.359 (0.43)	-0.808 (-0.78)
$Intensity_{abt-1y}$	-1.187 (-1.10)	-1.198 (-1.02)	1.785 (1.04)	-1.201 (-0.56)	0.065 (0.04)	-0.378 (-0.30)	0.004 (0.01)	0.503 (0.49)
$Pre\text{-}Announcement30_{st}$	0.042 (0.25)							
N	20,937	13,205	6,141	6,141	6,141	6,141	48,882	48,882
R^2	0.135	0.262	0.633	0.631	0.632	0.631	0.531	0.531
Trader FE	✓	✓	-	-	-	-	-	-
Security FE	✓	-	-	-	-	-	-	-
Date FE	✓	-	-	-	-	-	-	-
Security-Date FE	-	✓	✓	✓	✓	✓	✓	✓
Trader-Date FE	-	-	✓	✓	✓	✓	✓	✓
SE Cluster	Trader, Security	Trader, Security	Trader, Security	Trader, Security	Trader, Security	Trader, Security	Trader, Security	Trader, Security
Target (T)/Acquirer (A) stock	T	T	T	T	T	T	A	A
$Intensity_{abt-1y}$	Target Adv \rightarrow Trader	Target Adv \rightarrow Trader	Target Adv \rightarrow Trader	Acquirer Adv \rightarrow Trader	Trader \rightarrow Target Adv	Trader \rightarrow Acquirer Adv	Target Adv \rightarrow Trader	Acquirer Adv \rightarrow Trader

*** $p < 0.01$, ** $p < 0.05$, * $p < 0.1$
(t-statistics in parentheses)

Table 3: Effect of Bank Connectedness to Advisor on Stock Purchases: The sample is a panel at the bank (trader) - security - date level bst from 2010 to 2016, i.e., security s traded by bank b at date t with daily frequency. It contains trading in securities 30 days before and after an M&A announcement of the given security. $Pre-Announcement30_{st}$ equals 1 for days within 30 days prior to an M&A announcement of security s , and 0 otherwise. $Intensity_{abt-1y}$ in the sense of advisor $a \rightarrow$ bank (trader) b is calculated as the number of joint syndicated loans by a and b relative to the number of syndicated loans by advisor a in the year prior to the deal announcement of security s . The dependent variable is Buy_{bst} , which equals 1 for a positive net nominal amount traded by bank b in security s at date t , and 0 otherwise. Specifications vary by their focus on target stocks (T) [columns 1-6]/acquirer stocks (A) [columns 7-8], $Intensity_{abt-1y}$ (type of advisor and direction), and fixed effects. Standard errors are double-clustered at the bank (trader) and security level.

Buy_{bst} (1 if net nominal > 0, else 0)	(1)	(2)	(3)	(4)	(5)	(6)	(7)	(8)
$Pre-Announcement30_{st} \times Intensity_{abt-1y}$	0.369*** (4.86)	0.312*** (3.70)	0.258** (2.63)	0.172 (1.09)	0.289** (2.64)	0.066 (0.64)	0.014 (0.28)	-0.021 (-0.29)
$Intensity_{abt-1y}$	-0.094 (-1.31)	-0.078 (-1.02)	0.148 (1.30)	-0.001 (-0.01)	0.016 (0.17)	0.045 (0.59)	-0.023 (-0.59)	0.028 (0.54)
$Pre-Announcement30_{st}$	-0.011 (-0.99)							
N	21,658	13,737	6,615	6,615	6,615	6,615	50,994	50,994
R^2	0.143	0.284	0.646	0.645	0.646	0.645	0.538	0.538
Trader FE	✓	✓	-	-	-	-	-	-
Security FE	✓	-	-	-	-	-	-	-
Date FE	✓	-	-	-	-	-	-	-
Security-Date FE	-	✓	✓	✓	✓	✓	✓	✓
Trader-Date FE	-	-	✓	✓	✓	✓	✓	✓
SE Cluster	Trader, Security	Trader, Security	Trader, Security	Trader, Security	Trader, Security	Trader, Security	Trader, Security	Trader, Security
Target (T)/Acquirer (A) stock	T	T	T	T	T	T	A	A
$Intensity_{abt-1y}$	Target Adv \rightarrow Trader	Target Adv \rightarrow Trader	Target Adv \rightarrow Trader	Acquirer Adv \rightarrow Trader	Trader \rightarrow Target Adv	Trader \rightarrow Acquirer Adv	Target Adv \rightarrow Trader	Acquirer Adv \rightarrow Trader

*** p<0.01, ** p<0.05, * p<0.1
(t-statistics in parentheses)

Table 4: Effect of Bank Connectedness to Target vs. Acquirer Advisor on Stock Trading: The sample is a panel at the bank (trader) - security - date level bst from 2010 to 2016, i.e., security s traded by bank b at date t with daily frequency. It contains trading in securities 30 days before and after an M&A announcement of the given security. $Pre\text{-}Announcement30_{st}$ equals 1 for days within 30 days prior to an M&A announcement of security s , and 0 otherwise. $Intensity_{abt-1y}$ in the sense of (target/acquirer) advisor $a \rightarrow$ bank (trader) b is calculated as the number of joint syndicated loans by a and b relative to the number of syndicated loans by (target/acquirer) advisor a in the year prior to the deal announcement of security s . The dependent variable in columns 1-2 is $\text{sgn}(\ln(|Net\ nominal_{bst}|))$. For positive net nominal amounts, it is calculated as the natural logarithm of the net nominal traded by bank b in security s at date t . For negative net nominal amounts, the natural logarithm is calculated for the absolute value and then multiplied by -1. In columns 3-4, the dependent variable is Buy_{bst} , which equals 1 for a positive net nominal amount traded by bank b in security s at date t , and 0 otherwise. Specifications vary by their focus on target stocks (T) [columns 1 and 3]/acquirer stocks (A) [columns 2 and 4]. Standard errors are double-clustered at the bank (trader) and security level.

	$\text{sgn}(\ln(Net\ nominal_{bst}))$		Buy_{bst} (1 if net nominal > 0, else 0)	
	(1)	(2)	(3)	(4)
$Pre\text{-}Announcement30_{st} \times Intensity_{abt-1y}$ (Target Adv \rightarrow Trader)	6.204*** (3.08)	0.768 (0.83)	0.317** (2.69)	0.045 (0.87)
$Pre\text{-}Announcement30_{st} \times Intensity_{abt-1y}$ (Acquirer Adv \rightarrow Trader)	-1.658 (-0.68)	-1.170 (-1.01)	-0.065 (-0.34)	-0.043 (-0.63)
$Intensity_{abt-1y}$ (Target Adv \rightarrow Trader)	1.405 (0.80)	-0.202 (-0.26)	0.200 (1.69)	-0.027 (-0.63)
$Intensity_{abt-1y}$ (Acquirer Adv \rightarrow Trader)	1.066 (0.54)	0.668 (0.63)	0.140 (1.16)	0.038 (0.60)
N	6,141	48,882	6,367	49,587
R^2	0.633	0.531	0.649	0.535
Security-Date FE	✓	✓	✓	✓
Trader-Date FE	✓	✓	✓	✓
SE Cluster	Trader, Security	Trader, Security	Trader, Security	Trader, Security
Target (T)/Acquirer (A) stock	T	A	T	A

*** $p < 0.01$, ** $p < 0.05$, * $p < 0.1$
(t-statistics in parentheses)

Table 5: Effect of Bank Connectedness to Target vs. Acquirer Advisor on Stock Trading—Interbank Networks: The sample is a panel at the bank (trader) - security - date level bst from 2010 to 2016, i.e., security s traded by bank b at date t with daily frequency. It contains trading in securities 30 days before and after an M&A announcement of the given security. $Pre\text{-}Announcement30_{st}$ equals 1 for days within 30 days prior to an M&A announcement of security s , and 0 otherwise. $Intensity_{ab}$ in the sense of bank (trader) $b \rightarrow$ (target/acquirer) advisor a is calculated as the number of joint/bilateral interbank transactions by a and b relative to the number of interbank transactions by German bank (trader) b in 2016. The dependent variable in columns 1-2 is $\text{sgn}(\ln(|Net\ nominal_{bst}|))$. For positive net nominal amounts, it is calculated as the natural logarithm of the net nominal traded by bank b in security s at date t . For negative net nominal amounts, the natural logarithm is calculated for the absolute value and then multiplied by -1. In columns 3-4, the dependent variable is Buy_{bst} , which equals 1 for a positive net nominal amount traded by bank b in security s at date t , and 0 otherwise. Specifications vary by their focus on target stocks (T) [columns 1 and 3]/acquirer stocks (A) [columns 2 and 4]. Standard errors are double-clustered at the bank (trader) and security level.

	$\text{sgn}(\ln(Net\ nominal_{bst}))$		Buy_{bst} (1 if net nominal > 0, else 0)	
	(1)	(2)	(3)	(4)
$Pre\text{-}Announcement30_{st} \times Intensity_{ab}$ (Trader \rightarrow Target Adv)	32.099*** (3.93)	-0.981 (-0.32)	1.887*** (3.52)	0.065 (0.33)
$Pre\text{-}Announcement30_{st} \times Intensity_{ab}$ (Trader \rightarrow Acquirer Adv)	-16.389 (-1.53)	0.026 (0.01)	-1.424** (-2.26)	-0.005 (-0.03)
$Intensity_{ab}$ (Trader \rightarrow Target Adv)	-28.655*** (-4.39)	-0.622 (-0.33)	-1.472*** (-4.01)	0.024 (0.15)
$Intensity_{ab}$ (Trader \rightarrow Acquirer Adv)	13.134* (2.01)	1.551 (0.67)	1.163*** (2.78)	0.061 (0.53)
N	6,141	48,882	6,367	49,587
R^2	0.632	0.531	0.647	0.538
Security-Date FE	✓	✓	✓	✓
Trader-Date FE	✓	✓	✓	✓
SE Cluster	Trader, Security	Trader, Security	Trader, Security	Trader, Security
Target (T)/Acquirer (A) stock	T	A	T	A

*** $p < 0.01$, ** $p < 0.05$, * $p < 0.1$
(t-statistics in parentheses)

Table 6: Effect of Bank Connectedness to Target Advisor on Target Stock Trading—Robustness: The sample is a panel at the bank (trader) - security - date level bst from 2010 to 2016, i.e., target security s traded by bank b at date t with daily frequency. The sample in columns 1-9 contains trading in securities 30 days before and after an M&A announcement of the given target security. In columns 10-11, the sample takes trading in all securities into account by replacing missing intensities with 0 (balanced sample). $Pre\text{-}Announcement30_{st}$ equals 1 for days within 30 days prior to an M&A announcement of security s , and 0 otherwise. $Intensity_{abt-xy}$ in the sense of advisor $a \rightarrow$ bank (trader) b is calculated as the number of joint syndicated loans by a and b relative to the number of syndicated loans by advisor a x years prior to the deal announcement of security s . The relevant period for the calculation always refers to the year prior to the deal announcement. The dependent variable is $\text{sgn}(\ln(|Net\ nominal_{bst}|))$. For positive net nominal amounts, it is calculated as the natural logarithm of the net nominal traded by bank b in security s at date t . For negative net nominal amounts, the natural logarithm is calculated for the absolute value and then multiplied by -1. $Non\text{-}DE_s$ equals 1 if the company of security s is located outside Germany, and 0 otherwise (column 1). $Large_{st-1y}$ equals 1 if the market capitalization of security s is in the top quartile of the respective distribution in the year prior to an M&A announcement of security s , and 0 otherwise (column 2). $Industry\ share_{bst-1y}$ is the industry exposure based on security s 's two-digit industry code relative to the total securities portfolio of bank (trader) b in the year prior to the deal announcement of security s (column 3). Industry-level fixed effects in columns 4 and 5 are also based on security s 's two-digit industry code. Specifications vary by fixed effects, interaction terms, and reference period x of the intensity measure. Standard errors are double-clustered at the bank (trader) and security level.

	(1)	(2)	(3)	(4)	(5)	(6)	(7)	(8)	(9)	(10)	(11)
$\text{sgn}(\ln(Net\ nominal_{bst}))$											
$Pre\text{-}Announcement30_{st} \times Intensity_{abt-xy}$	5.535*** (2.96)	5.157*** (2.80)	5.625*** (3.48)	14.829*** (2.85)	31.175** (3.04)	5.963*** (2.93)	4.985*** (3.63)	6.141*** (4.08)	10.454*** (3.22)	4.770*** (3.21)	4.050*** (2.88)
$Intensity_{abt-xy}$	2.608 (1.19)	2.730 (1.07)	1.775 (1.02)	-5.990* (-2.02)	-25.947** (-2.67)	2.153 (0.96)	0.114 (0.07)	1.168 (0.59)	3.572 (0.16)	-2.780** (-2.33)	-1.610 (-1.34)
$Pre\text{-}Announcement30_{st} \times Intensity_{abt-1y} \times Non\text{-}DE_s$	-1.784 (-0.46)										
$Intensity_{abt-1y} \times Non\text{-}DE_s$	-2.052 (-0.61)										
$Pre\text{-}Announcement30_{st} \times Intensity_{abt-1y} \times Large_s$		0.481 (0.23)									
$Intensity_{abt-1y} \times Large_s$		-1.882 (-0.66)									
$Pre\text{-}Announcement30_{st} \times Industry\ share_{bst-1y}$			0.887 (0.23)								
$Industry\ share_{bst-1y}$			3.963** (2.72)								
N	6,141	6,141	6,141	5,749	432	6,141	6,141	6,141	6,141	7,064,681	7,035,796
R^2	0.633	0.633	0.633	0.696	0.679	0.633	0.632	0.633	0.698	0.293	0.310
Trader-Date FE	✓	✓	✓	✓	-	✓	✓	✓	✓	✓	✓
Trader-Industry-Pre-Announcement FE	-	-	-	✓	-	-	-	-	-	-	-
Trader-Industry-Date FE	-	-	-	-	✓	-	-	-	-	-	-
Security-Date FE	✓	✓	✓	✓	✓	✓	✓	✓	✓	✓	✓
Trader-Advisor FE	-	-	-	-	-	-	-	-	✓	-	-
Trader-Security FE	-	-	-	-	-	-	-	-	-	-	✓
SE Cluster	Trader, Security	Trader, Security	Trader, Security	Trader, Security	Trader, Security	Trader, Security	Trader, Security	Trader, Security	Trader, Security	Trader, Security	Trader, Security
Sample adjustment	-	-	-	-	-	-	-	-	-	Filled	Filled
$Intensity_{abt-xy}$	Target Adv \rightarrow Trader	Target Adv \rightarrow Trader	Target Adv \rightarrow Trader	Target Adv \rightarrow Trader	Target Adv \rightarrow Trader	Target Adv \rightarrow Trader	Target Adv \rightarrow Trader	Target Adv \rightarrow Trader	Target Adv \rightarrow Trader	Target Adv \rightarrow Trader	Target Adv \rightarrow Trader
Reference period x of $Intensity_{abt-xy}$ (lag in years)	1	1	1	1	1	2	3	1 to 3 (average)	1	1	1

*** p<0.01, ** p<0.05, * p<0.1
(t-statistics in parentheses)

Table 7: **Effect of Bank Connectedness to Target Advisor on Target Stock Trading—Deal Heterogeneity:** The sample is a panel at the bank (trader) - security - date level bst from 2010 to 2016, i.e., target security s traded by bank b at date t with daily frequency. It contains trading in securities 30 days before and after an M&A announcement of the given target security. $Pre\text{-}Announcement30_{st}$ equals 1 for days within 30 days prior to an M&A announcement of security s , and 0 otherwise. $Intensity_{abt-1y}$ in the sense of target advisor $a \rightarrow$ bank (trader) b is calculated as the number of joint syndicated loans by a and b relative to the number of syndicated loans by target advisor a in the year prior to the deal announcement of security s (Target Adv \rightarrow Trader). The dependent variable is $\text{sgn}(\ln(|Net\ nominal_{bst}|))$. For positive net nominal amounts, it is calculated as the natural logarithm of the net nominal traded by bank b in security s at date t . For negative net nominal amounts, the natural logarithm is calculated for the absolute value and then multiplied by -1. Deal heterogeneity is characterized by the medium of exchange. In column 1, only pure cash bids are taken into account, whereas column 2 considers only pure stock bids. The remaining columns include both pure cash and pure stock deals. Standard errors are double-clustered at the bank (trader) and security level.

	Cash	Stock		
$\text{sgn}(\ln(Net\ nominal_{bst}))$	(1)	(2)	(3)	(4)
$Pre\text{-}Announcement30_{st} \times Intensity_{abt-1y}$	6.426*** (3.63)	-2.569 (-0.65)	6.455*** (3.66)	5.210** (2.11)
$Intensity_{abt-1y}$	-1.944 (-1.03)	6.867 (1.38)	-1.924 (-1.07)	-1.083 (-0.33)
$Pre\text{-}Announcement30_{st} \times Intensity_{abt-1y} \times Stock_{kst}$			-8.529* (-1.85)	-16.931** (-2.19)
$Intensity_{abt-1y} \times Stock_{kst}$			2.062 (0.38)	0.109 (0.01)
N	6,983	1,151	8,135	2,800
R^2	0.257	0.379	0.270	0.652
Security-Date FE	✓	✓	✓	✓
Trader FE	✓	✓	✓	-
Trader-Date FE	-	-	-	✓
SE Cluster	Trader, Security	Trader, Security	Trader, Security	Trader, Security

*** $p < 0.01$, ** $p < 0.05$, * $p < 0.1$
(t-statistics in parentheses)

Table 8: Effect of Bank Connectedness to Advisor on Target Stock Trading—Timing: The sample is a panel at the bank (trader) - security - date level bst from 2010 to 2016, i.e., target security s traded by bank b at date t with daily frequency. It contains trading in securities X days before and after an M&A announcement of the given target security. $Pre\text{-}AnnouncementX_{st}$ equals 1 for days within X days prior to an M&A announcement of security s , and 0 otherwise, where X equals 15 days in columns 1 and 6, 30 days in columns 2 and 7, 60 days in columns 3 and 8, and 100 days in columns 4 and 9. Time-period definitions used in columns 5 and 10 are disjoint. $Intensity_{abt-1y}$ in the sense of target advisor $a \rightarrow$ bank (trader) b is calculated as the number of joint syndicated loans by a and b relative to the number of syndicated loans by target advisor a in the year prior to the deal announcement of security s (Target Adv \rightarrow Trader). The dependent variable in columns 1-5 is $\text{sgn}(\ln(|Net\ nominal_{bst}|))$. For positive net nominal amounts, it is calculated as the natural logarithm of the net nominal traded by bank b in security s at date t . For negative net nominal amounts, the natural logarithm is calculated for the absolute value and then multiplied by -1. The dependent variable in columns 6-10 is Buy_{bst} , which equals 1 for a positive net nominal amount traded by bank b in security s at date t , and 0 otherwise. Standard errors are double-clustered at the bank (trader) and security level.

	sgn(ln(Net nominal _{bst}))					Buy _{bst} (1 if net nominal > 0, else 0)				
	(1)	(2)	(3)	(4)	(5)	(6)	(7)	(8)	(9)	(10)
<i>Pre-Announcement</i> _{15_{st}} × <i>Intensity</i> _{abt-1y}	11.891*** (2.95)					0.572** (2.37)				
<i>Pre-Announcement</i> _{30_{st}} × <i>Intensity</i> _{abt-1y}		5.386*** (3.26)					0.252*** (3.01)			
<i>Pre-Announcement</i> _{60_{st}} × <i>Intensity</i> _{abt-1y}			3.420*** (2.94)					0.239*** (3.37)		
<i>Pre-Announcement</i> _{100_{st}} × <i>Intensity</i> _{abt-1y}				2.587** (2.41)					0.146** (2.19)	
<i>Pre-Announcement</i> _{15_{st}} × <i>Intensity</i> _{abt-1y}					5.643*** (3.14)					0.281** (2.43)
<i>Pre-Announcement</i> _{30_{st}} (disjoint) × <i>Intensity</i> _{abt-1y}					4.363* (1.75)					0.355** (2.44)
<i>Pre-Announcement</i> _{60_{st}} (disjoint) × <i>Intensity</i> _{abt-1y}					1.766 (1.04)					0.100 (1.09)
<i>Pre-Announcement</i> _{100_{st}} (disjoint) × <i>Intensity</i> _{abt-1y}					1.060 (0.62)					0.032 (0.34)
<i>Intensity</i> _{abt-1y}	-3.545 (-1.03)	1.785 (1.03)	1.067 (0.82)	-1.131 (-0.93)	-1.159 (-0.95)	-0.246 (-0.94)	0.239** (2.35)	0.063 (0.78)	-0.054 (-0.78)	-0.057 (-0.83)
<i>N</i>	2,300	6,141	13,784	22,018	22,018	2,380	6,367	14,178	22,535	22,535
<i>R</i> ²	0.699	0.633	0.597	0.575	0.575	0.700	0.648	0.604	0.581	0.581
Trader-Date FE	✓	✓	✓	✓	✓	✓	✓	✓	✓	✓
Security-Date FE	✓	✓	✓	✓	✓	✓	✓	✓	✓	✓
SE Cluster	Trader, Security	Trader, Security	Trader, Security	Trader, Security	Trader, Security	Trader, Security	Trader, Security	Trader, Security	Trader, Security	Trader, Security

*** p<0.01, ** p<0.05, * p<0.1
(t-statistics in parentheses)

Table 9: **Trading by Advisors:** The sample is a panel at the bank (trader) - security - date level bst from 2010 to 2016, i.e., security s traded by bank b at date t with daily frequency. It contains trading in securities 30 days before and after an M&A announcement of the given security (columns 1-4). In addition, the sample in columns 5-8 excludes trades by non-advisors that are connected to any non-zero extent to either one of the advisors (i.e., any $Intensity_{abt-1y} > 0$). $Pre-Announcement30_{st}$ equals 1 for days within 30 days prior to an M&A announcement of security s , and 0 otherwise. $Advisor_{bst}$ equals 1 if trader b is the target (acquirer) advisor of a deal involving security s in columns 1, 3, 5, and 7 (2, 4, 6, and 8), and 0 otherwise. The dependent variable is $\text{sgn}(\ln(|Net\ nominal_{bst}|))$. For positive net nominal amounts, it is calculated as the natural logarithm of the net nominal traded by bank b in security s at date t . For negative net nominal amounts, the natural logarithm is calculated for the absolute value and then multiplied by -1. Specifications vary by their focus on target stocks (T) [columns 1-2 and 5-6]/acquirer stocks (A) [columns 3-4 and 7-8], and the underlying sample restriction. Standard errors are double-clustered at the bank (trader) and security level.

$\text{sgn}(\ln(Net\ nominal_{bst}))$	(1)	(2)	(3)	(4)	(5)	(6)	(7)	(8)
$Pre-Announcement30_{st} \times Advisor_{bst}$	-3.344*** (-4.51)	2.387 (1.23)	-1.598 (-0.47)	-1.297 (-0.85)	-3.492 (-1.21)	-5.854 (-0.82)	-1.704 (-0.44)	-1.338 (-0.85)
$Advisor_{bst}$	0.936* (1.81)	-0.793 (-1.15)	1.658 (1.37)	-1.150 (-1.30)	4.072*** (3.08)	9.227*** (2.87)	0.906 (0.61)	-1.617* (-1.83)
N	6,496	6,496	49,675	49,675	3,479	3,479	39,553	39,553
R^2	0.625	0.625	0.527	0.527	0.633	0.633	0.549	0.550
Trader-Date FE	✓	✓	✓	✓	✓	✓	✓	✓
Security-Date FE	✓	✓	✓	✓	✓	✓	✓	✓
SE Cluster	Trader, Security	Trader, Security	Trader, Security	Trader, Security	Trader, Security	Trader, Security	Trader, Security	Trader, Security
Excl. non-advisors with $Intensity_{abt-1y} > 0$	-	-	-	-	✓	✓	✓	✓
Target (T)/Acquirer (A) stock	T	T	A	A	T	T	A	A
$Advisor_{bst}$	Target Adv.	Acquirer Adv.	Target Adv.	Acquirer Adv.	Target Adv.	Acquirer Adv.	Target Adv.	Acquirer Adv.

*** p<0.01, ** p<0.05, * p<0.1
(t-statistics in parentheses)

Table 10: Effect of Bank Connectedness to Banks Connected to Target vs. Acquirer Advisor on Stock Trading: The sample is a panel at the bank (trader) - security - date level bst from 2010 to 2016, i.e., security s traded by bank b at date t with daily frequency. It contains trading in securities 30 days before and after an M&A announcement of the given security. $Pre\text{-}Announcement_{30st}$ equals 1 for days within 30 days prior to an M&A announcement of security s , and 0 otherwise. $Intensity_{cbt-1y}$ in the sense of a (target/acquirer) advisor-connected bank $c \rightarrow$ bank (trader) b is calculated as the number of joint syndicated loans by c and b relative to the number of syndicated loans by (target/acquirer) advisor-connected bank c (defined as the bank c with the maximum value of $Intensity_{cbt-1y}$ in case of multiple banks with non-zero connectedness to the respective advisor a) in the year prior to the deal announcement of security s . The dependent variable in columns 1-2 is $\text{sgn}(\ln(|Net\ nominal_{bst}|))$. For positive net nominal amounts, it is calculated as the natural logarithm of the net nominal traded by bank b in security s at date t . For negative net nominal amounts, the natural logarithm is calculated for the absolute value and then multiplied by -1 . In columns 3-4, the dependent variable is Buy_{bst} , which equals 1 for a positive net nominal amount traded by bank b in security s at date t , and 0 otherwise. Banks (trader) having a direct connection to a (target/acquirer) advisor in the year prior to deal announcement of security s are excluded. Specifications vary by their focus on target stocks (T) [columns 1 and 3]/acquirer stocks (A) [columns 2 and 4]. Standard errors are double-clustered at the bank (trader) and security level.

	$\text{sgn}(\ln(Net\ nominal_{bst}))$		Buy_{bst} (1 if net nominal > 0, else 0)	
	(1)	(2)	(3)	(4)
$Pre\text{-}Announcement_{30st} \times Intensity_{cbt-1y}$ (Target Adv Connected Bank \rightarrow Trader)	83.600*	-1.470	5.716**	-0.190
	(2.00)	(-0.46)	(2.28)	(-0.88)
$Pre\text{-}Announcement_{30st} \times Intensity_{cbt-1y}$ (Acquirer Adv Connected Bank \rightarrow Trader)	-33.287	8.524	-3.504	0.871
	(-0.93)	(0.39)	(-1.59)	(0.54)
$Intensity_{cbt-1y}$ (Target Adv Connected Bank \rightarrow Trader)	7.467	2.787**	0.471	0.225**
	(0.60)	(2.10)	(0.64)	(2.12)
$Intensity_{cbt-1y}$ (Acquirer Adv Connected Bank \rightarrow Trader)	38.865	-15.090	3.965	-1.667
	(0.92)	(-1.34)	(1.56)	(-1.54)
N	1,159	19,720	1,301	21,405
R^2	0.708	0.630	0.728	0.632
Security-Date FE	✓	✓	✓	✓
Trader-Date FE	✓	✓	✓	✓
SE Cluster	Trader, Security	Trader, Security	Trader, Security	Trader, Security
Target (T)/Acquirer (A) stock	T	A	T	A

*** $p < 0.01$, ** $p < 0.05$, * $p < 0.1$
(t-statistics in parentheses)

Table 11: Effect of Bank Connectedness to Target Advisor on Target Stock Prices Paid:
The sample is a panel at the bank (trader) - security - date level bst from 2010 to 2016, i.e., target security s traded by bank b at date t with daily frequency. It contains purchases of securities 30 days before and after an M&A announcement of the given target security. $Intensity_{abt-1y}$ in the sense of advisor $a \rightarrow$ bank (trader) b is calculated as the number of joint syndicated loans by a and b relative to the number of syndicated loans by advisor a in the year prior to the deal announcement of security s (Target Adv \rightarrow Trader). The dependent variable, $Price (vol.wgt.)_{bst}$, is the volume-weighted price paid by trader b for a given security s at date t . All regressions control for the natural logarithm of the nominal amount purchased and the number of trades. Standard errors are double-clustered at the bank (trader) and security level.

$Price (vol.wgt.)_{bst}$	(1)	(2)	(3)	(4)	(5)
$Intensity_{abt-1y}$	-4.001** (-2.17)	-6.718** (-2.06)	-1.290* (-1.78)	-1.400* (-1.85)	0.545 (0.90)
N	15,865	15,865	15,865	15,853	9,322
R^2	0.914	0.917	0.918	0.942	0.938
Security FE	✓	✓	✓	✓	-
Trader FE	-	✓	✓	-	-
Year FE	-	-	✓	-	-
Trader-Year FE	-	-	-	✓	✓
Security-Date FE	-	-	-	-	✓
Controls	ln(nominal) and number of trades				
SE Cluster	Trader, Security				

*** $p < 0.01$, ** $p < 0.05$, * $p < 0.1$
(t-statistics in parentheses)

Table 12: **Effect of Informed Trading on Premia Paid:** The level of observation is the deal level d . The sample contains effective M&A deals between 2010 and 2016. The dependent variable, $Premium_d$, is the premium paid for the acquisition of target s at date t and defined as $(Price\ Paid_{st} - Price_{st-60})/Price_{st-60}$, where $Price_{st-60}$ denotes the stock price of target s 60 days prior to the M&A announcement. We use connected trading 60 days before the deal is announced to construct the explanatory variable, $Informed\ Trading\ Exposure_d$, which is an intensity-weighted exposure measure to informed trading (scaled by the market capitalization of stock s divided by 1,000, and winsorized at -1 and 1): $\sum_s \sum_{t \in T(60)} (Intensity_{abt-1y} \times Trading_{bst}) / \left(\sum_{t \in T(60)} |Trading_{st}| \right)$, where $Intensity_{abt-1y}$ in the sense of target advisor $a \rightarrow$ bank (trader) b is calculated as the number of joint syndicated loans by a and b relative to the number of syndicated loans by target advisor a in the year prior to the deal announcement of security s (Target Adv \rightarrow Trader), $Trading_{bst}$ captures all of trading bank b 's net purchases of target stock s at date t , and $|Trading_{st}|$ denotes total absolute transactions (both purchases and sales) by any bank of target stock s at date t . All regressions control for whether there exist multiple bids for the respective target of deal d within one year and the market capitalization of target stock s in the year prior to announcement of deal d . Fixed effects are based on a combination of the year of deal d , the target's country of incorporation, SIC industry division, and advisor. Standard errors are clustered at the security level.

$Premium_d$	(1)	(2)	(3)	(4)
$Informed\ Trading\ Exposure_d$	0.266*** (3.96)	0.305*** (3.20)	0.401*** (5.36)	0.352*** (3.31)
N	411	326	257	208
R^2	0.233	0.385	0.500	0.596
Industry(T)-Country(T) FE	✓	✓	✓	-
Year FE	✓	✓	-	-
Advisor(T) FE	-	✓	-	-
Advisor(T)-Year FE	-	-	✓	✓
Industry(T)-Country(T)-Year FE	-	-	-	✓
Controls	Competing offers and market cap of T			
Deals	Effective			
SE Cluster	Security			

*** $p < 0.01$, ** $p < 0.05$, * $p < 0.1$
(t-statistics in parentheses)

Table 13: Effect of Informed Trading on Runups and the Markup Pricing Hypothesis: The level of observation is the deal level d . The sample contains effective M&A deals between 2010 and 2016. The dependent variable in columns 1-4, $Runup_d$, is the runup for the acquisition of target s at date t and defined as $(Price_{st-1} - Price_{st-60})/Price_{st-60}$, where $Price_{st-60}$ denotes the stock price of target s 60 days prior to the M&A announcement. The dependent variable in columns 5-8, $Markup_d$, is the markup for the acquisition of target s at date t and defined as $(Price Paid_{st} - Price_{st-1})/Price_{st-1}$, where $Price_{st-1}$ denotes the stock price of target s 1 day prior to the M&A announcement. We use connected trading 60 days before the deal is announced to construct the explanatory variable, $Informed Trading Exposure_d$, which is an intensity-weighted exposure measure to informed trading (scaled by the market capitalization of stock s divided by 1,000, and winsorized at -1 and 1): $\sum_s \sum_{t \in T(60)} (Intensity_{abt-1y} \times Trading_{bst}) / \left(\sum_{t \in T(60)} |Trading_{st}| \right)$, where $Intensity_{abt-1y}$ in the sense of target advisor $a \rightarrow$ bank (trader) b is calculated as the number of joint syndicated loans by a and b relative to the number of syndicated loans by target advisor a in the year prior to the deal announcement of security s (Target Adv \rightarrow Trader), $Trading_{bst}$ captures all of trading bank b 's net purchases of target stock s at date t , and $|Trading_{st}|$ denotes total absolute transactions (both purchases and sales) by any bank of target stock s at date t . All regressions control for whether there exist multiple bids for the respective target of deal d within one year and the market capitalization of target stock s in the year prior to announcement of deal d . Fixed effects are based on a combination of the year of deal d , the target's country of incorporation, SIC industry division, and advisor. Standard errors are clustered at the security level.

	$Runup_d$				$Markup_d$			
	(1)	(2)	(3)	(4)	(5)	(6)	(7)	(8)
$Informed Trading Exposure_d$	0.208** (2.28)	0.306** (2.58)	0.327*** (3.03)	0.200** (1.99)				
$Runup_d$					-0.506*** (-3.21)	-0.565*** (-3.79)	-0.349*** (-5.42)	-0.407*** (-4.32)
N	411	326	257	208	411	326	257	208
R^2	0.065	0.187	0.447	0.562	0.309	0.464	0.568	0.618
Industry(T)-Country(T) FE	✓	✓	✓	-	✓	✓	✓	-
Year FE	✓	✓	-	-	✓	✓	-	-
Advisor(T) FE	-	✓	-	-	-	✓	-	-
Advisor(T)-Year FE	-	-	✓	✓	-	-	✓	✓
Industry(T)-Country(T)-Year FE	-	-	-	✓	-	-	-	✓
Controls					Competing offers and market cap of T			
Deals					Effective			
SE Cluster					Security			

*** $p < 0.01$, ** $p < 0.05$, * $p < 0.1$
(t-statistics in parentheses)

Table 14: **Effect of Informed Trading on Deal Success:** The level of observation is the deal level d . The sample contains effective and withdrawn M&A deals between 2010 and 2016. The dependent variable, $Effective_d$, is a dummy variable that equals 1 in case of a successful takeover, and 0 otherwise. We use connected trading 60 days before the deal is announced to construct the explanatory variable, $Informed\ Trading\ Exposure_d$, which is an intensity-weighted exposure measure to informed trading (scaled by the market capitalization of stock s divided by 1,000, and winsorized at -1 and 1): $\sum_s \sum_{t \in T(60)} (Intensity_{abt-1y} \times Trading_{bst}) / \left(\sum_{t \in T(60)} |Trading_{st}| \right)$, where $Intensity_{abt-1y}$ in the sense of target advisor $a \rightarrow$ bank (trader) b is calculated as the number of joint syndicated loans by a and b relative to the number of syndicated loans by target advisor a in the year prior to the deal announcement of security s (Target Adv \rightarrow Trader), $Trading_{bst}$ captures all of trading bank b 's purchases of target stock s at date t , and $|Trading_{st}|$ denotes total absolute transactions (both purchases and sales) by any bank of target stock s at date t . All regressions control for whether there exist multiple bids for the respective target of deal d within one year and the market capitalization of target stock s in the year prior to announcement of deal d . Fixed effects are based on a combination of the year of deal d , the target's country of incorporation, SIC industry division, and advisor. Standard errors are clustered at the security level.

$Effective_d$	(1)	(2)	(3)	(4)
$Informed\ Trading\ Exposure_d$	-0.027 (-0.38)	-0.035 (-0.61)	-0.013 (-0.32)	-0.046 (-1.09)
N	501	371	290	228
R^2	0.367	0.804	0.782	0.821
Industry(T)-Country(T) FE	✓	✓	✓	-
Year FE	✓	✓	-	-
Advisor(T) FE	-	✓	-	-
Advisor(T)-Year FE	-	-	✓	✓
Industry(T)-Country(T)-Year FE	-	-	-	✓
Controls	Competing offers and market cap of T			
Deals	Effective and withdrawn			
SE Cluster	Security			

*** $p < 0.01$, ** $p < 0.05$, * $p < 0.1$
(t-statistics in parentheses)

ONLINE APPENDIX—NOT FOR PUBLICATION

Table A1: Effect of Bank Connectedness to Target vs. Acquirer Advisor on Stock Trading—Interbank Networks and Discrete Intensity: The sample is a panel at the bank (trader) - security - date level bst from 2010 to 2016, i.e., security s traded by bank b at date t with daily frequency. It contains trading in securities 30 days before and after an M&A announcement of the given security. $Pre\text{-}Announcement_{30_{st}}$ equals 1 for days within 30 days prior to an M&A announcement of security s , and 0 otherwise. $Relationship_{ab}$ equals 1 if $Intensity_{ab} > 0$, where $Intensity_{ab}$ in the sense of bank (trader) $b \rightarrow$ (target/acquirer) advisor a is calculated as the number of joint/bilateral interbank transactions by a and b relative to the number of interbank transactions by German bank (trader) b in 2016, and 0 otherwise. The dependent variable in columns 1-2 is $\text{sgn}(\ln(|Net\ nominal_{bst}|))$. For positive net nominal amounts, it is calculated as the natural logarithm of the net nominal traded by bank b in security s at date t . For negative net nominal amounts, the natural logarithm is calculated for the absolute value and then multiplied by -1 . In columns 3-4, the dependent variable is Buy_{bst} , which equals 1 for a positive net nominal amount traded by bank b in security s at date t , and 0 otherwise. Specifications vary by their focus on target stocks (T) [columns 1 and 3]/acquirer stocks (A) [columns 2 and 4]. Standard errors are double-clustered at the bank (trader) and security level.

	$\text{sgn}(\ln(Net\ nominal_{bst}))$		Buy_{bst} (1 if net nominal > 0 , else 0)	
	(1)	(2)	(3)	(4)
$Pre\text{-}Announcement_{30_{st}} \times Relationship_{ab}$ (Trader \rightarrow Target Adv)	2.000** (2.50)	-0.272 (-0.82)	0.161*** (3.84)	-0.011 (-0.55)
$Pre\text{-}Announcement_{30_{st}} \times Relationship_{ab}$ (Trader \rightarrow Acquirer Adv)	-0.699 (-1.26)	0.226 (0.68)	-0.075** (-2.05)	0.011 (0.63)
$Relationship_{ab}$ (Trader \rightarrow Target Adv)	-1.592** (-2.58)	0.208 (0.92)	-0.098** (-2.66)	0.017 (1.18)
$Relationship_{ab}$ (Trader \rightarrow Acquirer Adv)	0.960** (2.19)	-0.238 (-0.95)	0.101*** (3.77)	-0.018 (-1.15)
N	6,141	48,882	6,367	49,587
R^2	0.632	0.531	0.647	0.538
Security-Date FE	✓	✓	✓	✓
Trader-Date FE	✓	✓	✓	✓
SE Cluster	Trader, Security	Trader, Security	Trader, Security	Trader, Security
Target (T)/Acquirer (A) stock	T	A	T	A

*** $p < 0.01$, ** $p < 0.05$, * $p < 0.1$
(t-statistics in parentheses)

Table A2: Effect of Bank Connectedness to Target Advisor on Target Stock Trading—Robustness Intensity: The sample is a panel at the bank (trader) - security - date level bst from 2010 to 2016, i.e., target security s traded by bank b at date t with daily frequency. The sample contains trading in securities 30 days before and after an M&A announcement of the given target security. $Pre\text{-}Announcement30_{st}$ equals 1 for days within 30 days prior to an M&A announcement of security s , and 0 otherwise. $Intensity_{abt-1y}$ in the sense of advisor $a \rightarrow$ bank (trader) b is calculated as the number of joint syndicated loans by a and b relative to the number of syndicated loans by advisor a in the year prior to the deal announcement of security s . Across columns, the definition of $Intensity_{abt-1y}$ varies as follows. Intensity *overall* is the maximum intensity between trader and advisor, irrespective of direction and type of advisor. Intensity *target (acquirer)* is the maximum of target (acquirer) advisor \rightarrow trader and trader \rightarrow target (acquirer) advisor. Intensity *advisor* is the maximum of target advisor \rightarrow trader and acquirer advisor \rightarrow trader. Intensity *trader* is the maximum of trader \rightarrow target advisor and trader \rightarrow acquirer advisor. The relevant period for the calculation always refers to the year prior to the deal announcement. The dependent variable is $\text{sgn}(\ln(|Net\ nominal_{bst}|))$. For positive net nominal amounts, it is calculated as the natural logarithm of the net nominal traded by bank b in security s at date t . For negative net nominal amounts, the natural logarithm is calculated for the absolute value and then multiplied by -1. Specifications vary by $Intensity_{abt-1y}$ and fixed effects. Standard errors are double-clustered at the bank (trader) and security level.

$\text{sgn}(\ln(Net\ nominal_{bst}))$	(1)	(2)	(3)	(4)	(5)
$Pre\text{-}Announcement30_{st} \times Intensity_{abt-1y}$	3.111** (2.21)	4.645*** (3.17)	1.190 (0.85)	4.521** (2.42)	3.759** (2.20)
$Intensity_{abt-1y}$	0.895 (0.61)	1.688 (1.09)	0.236 (0.19)	1.547 (0.89)	-0.758 (-0.60)
N	6,141	6,141	6,141	6,141	6,141
R^2	0.632	0.633	0.631	0.632	0.632
Trader-Date FE	✓	✓	✓	✓	✓
Security-Date FE	✓	✓	✓	✓	✓
SE Cluster	Trader, Security	Trader, Security	Trader, Security	Trader, Security	Trader, Security
$Intensity_{abt-1y}$	Overall	Target	Acquirer	Advisor	Trader

*** $p < 0.01$, ** $p < 0.05$, * $p < 0.1$
(t-statistics in parentheses)

Table A3: Effect of Bank Connectedness to Target Advisor on Target Stock Trading—Timing and Discrete Intensity: The sample is a panel at the bank (trader) - security - date level bst from 2010 to 2016, i.e., target security s traded by bank b at date t with daily frequency. It contains trading in securities X days before and after an M&A announcement of the given target security. $Pre\text{-}AnnouncementX_{st}$ equals 1 for days within X days prior to an M&A announcement of security s , and 0 otherwise, where X equals 15 days in columns 1 and 6, 30 days in columns 2 and 7, 60 days in columns 3 and 8, and 100 days in columns 4 and 9. Time-period definitions used in columns 5 and 10 are disjoint. $Relationship_{abt-1y}$ equals 1 if $Intensity_{abt-1y} > 0$, where $Intensity_{abt-1y}$ in the sense of target advisor $a \rightarrow$ bank (trader) b is calculated as the number of joint syndicated loans by a and b relative to the number of syndicated loans by target advisor a in the year prior to the deal announcement of security s (Target Adv \rightarrow Trader), and 0 otherwise. The dependent variable in columns 1-5 is $\text{sgn}(\ln(|Net\ nominal_{bst}|))$. For positive net nominal amounts, it is calculated as the natural logarithm of the net nominal traded by bank b in security s at date t . For negative net nominal amounts, the natural logarithm is calculated for the absolute value and then multiplied by -1. The dependent variable in columns 6-10 is Buy_{bst} , which equals 1 for a positive net nominal amount traded by bank b in security s at date t , and 0 otherwise. Standard errors are double-clustered at the bank (trader) and security level.

	sgn(ln(Net nominal _{bst}))					Buy _{bst} (1 if net nominal > 0, else 0)				
	(1)	(2)	(3)	(4)	(5)	(6)	(7)	(8)	(9)	(10)
<i>Pre-Announcement</i> 15 _{st} × <i>Relationship</i> _{abt-1y}	2.433** (2.36)					0.150** (2.59)				
<i>Pre-Announcement</i> 30 _{st} × <i>Relationship</i> _{abt-1y}		0.799 (1.53)					0.040 (1.26)			
<i>Pre-Announcement</i> 60 _{st} × <i>Relationship</i> _{abt-1y}			0.335 (1.09)					0.041** (2.16)		
<i>Pre-Announcement</i> 100 _{st} × <i>Relationship</i> _{abt-1y}				0.160 (0.49)					0.014 (0.74)	
<i>Pre-Announcement</i> 15 _{st} × <i>Relationship</i> _{abt-1y}					0.757* (1.86)					0.041 (1.42)
<i>Pre-Announcement</i> 30 _{st} (disjoint) × <i>Relationship</i> _{abt-1y}					0.145 (0.35)					0.013 (0.41)
<i>Pre-Announcement</i> 60 _{st} (disjoint) × <i>Relationship</i> _{abt-1y}					0.080 (0.14)					0.026 (0.87)
<i>Pre-Announcement</i> 100 _{st} (disjoint) × <i>Relationship</i> _{abt-1y}					0.006 (0.01)					-0.005 (-0.18)
<i>Relationship</i> _{abt-1y}	-0.265 (-0.31)	0.827* (1.73)	0.621** (2.28)	0.430 (1.45)	0.426 (1.44)	-0.035 (-0.77)	0.052* (1.91)	0.027 (1.68)	0.018 (1.09)	0.018 (1.07)
<i>N</i>	2,300	6,141	15,161	28,289	28,289	2,380	6,367	15,571	28,943	28,943
<i>R</i> ²	0.699	0.632	0.590	0.553	0.553	0.700	0.648	0.596	0.562	0.562
Trader-Date FE	✓	✓	✓	✓	✓	✓	✓	✓	✓	✓
Security-Date FE	✓	✓	✓	✓	✓	✓	✓	✓	✓	✓
SE Cluster	Trader, Security	Trader, Security	Trader, Security	Trader, Security	Trader, Security	Trader, Security	Trader, Security	Trader, Security	Trader, Security	Trader, Security

*** p<0.01, ** p<0.05, * p<0.1
(t-statistics in parentheses)

Table A4: **Effect of Bank Connectedness to Advisor on Target Stock Trading—Robustness Sample:** The sample is a panel at the bank (trader) - security - date level bst from 2010 to 2016, i.e., security s traded by bank b at date t with daily frequency. It contains trading in securities 30 days before and after an M&A announcement of the given security conditional on the available of information on the price paid per security s for a give deal at date t . $Pre\text{-}Announcement30_{st}$ equals 1 for days within 30 days prior to an M&A announcement of security s , and 0 otherwise. $Intensity_{abt-1y}$ in the sense of advisor $a \rightarrow$ bank (trader) b is calculated as the number of joint syndicated loans by a and b relative to the number of syndicated loans by advisor a in the year prior to the deal announcement of security s . The dependent variable in column 1-3 is $\text{sgn}(\ln(|Net\ nominal_{bst}|))$. For positive net nominal amounts, it is calculated as the natural logarithm of the net nominal traded by bank b in security s at date t . For negative net nominal amounts, the natural logarithm is calculated for the absolute value and then multiplied by -1. The dependent variable in column 4-6 is Buy_{bst} , which equals 1 for a positive net nominal amount traded by bank b in security s at date t , and 0 otherwise. Specifications vary by fixed effects. Standard errors are double-clustered at the bank (trader) and security level.

	sgn(ln(Net nominal _{bst}))			Buy _{bst} (1 if net nominal > 0, else 0)		
	(1)	(2)	(3)	(4)	(5)	(6)
$Pre\text{-}Announcement30_{st} \times Intensity_{abt-1y}$	6.649*** (4.03)	6.597*** (3.81)	5.905*** (3.47)	0.407*** (4.56)	0.383*** (3.94)	0.314** (2.61)
$Intensity_{abt-1y}$	-0.304 (-0.20)	-0.744 (-0.47)	3.688 (1.47)	-0.019 (-0.23)	-0.024 (-0.28)	0.170 (0.82)
$Pre\text{-}Announcement30_{st}$	0.717* (1.79)			0.040*** (2.98)		
N	13,520	7,801	2,678	14,017	8,145	2,985
R^2	0.183	0.286	0.695	0.189	0.308	0.700
Trader FE	✓	✓	-	✓	✓	-
Security FE	✓	-	-	✓	-	-
Date FE	✓	-	-	✓	-	-
Security-Date FE	-	✓	✓	-	✓	✓
Trader-Date FE	-	-	✓	-	-	✓
SE Cluster	Trader, Security	Trader, Security	Trader, Security	Trader, Security	Trader, Security	Trader, Security
$Intensity_{abt-1y}$	Target Adv → Trader	Target Adv → Trader	Target Adv → Trader	Target Adv → Trader	Target Adv → Trader	Target Adv → Trader

*** p<0.01, ** p<0.05, * p<0.1
(t-statistics in parentheses)



The Centre for Responsible Banking & Finance
CRBF Working Paper Series
Department of Finance, University of St Andrews
The Gateway, North Haugh,
St Andrews, Fife,
KY16 9RJ.
Scotland, United Kingdom
<https://crbf.wp.st-andrews.ac.uk/>



Recent CRBF Working papers published in this Series

Third Quarter | 2024

24-024 **Arito Ono, Kosuke Aoki, Shinichi Nishioka, Kohei Shintani, and Yosuke Yasui:** Long-term Interest Rates and Bank Loan Supply: Evidence from Firm-bank Loan-level Data.

24-023 **Oguzhan Cepni, Selçuk Gül, Abdullah Kazdal, and Muhammed Hasan Yilmaz:** Energy Supply and Industrial Outcomes: A Quasi-Experimental Evidence from Recent Natural Gas Outage.

24-022 **Oliver Janke and Gregor Weiß:** Green Capital Requirements, ESG Rating Uncertainty, and Greenwashing.

24-021 **Ray Charles “Chuck” Howard, David J. Hardisty, Dale W. Griffin, and Chongbo “Zack” Wang:** Income Prediction Bias in the Gig Economy.

24-020 **Melina Ludolph, Lena Tonzer, and Lars Brausewetter:** Distributional Income Effects of Banking Regulation in Europe.

24-019 **Vu Quang Trinh, Hai Hong Trinh, Tam Huy Nguyen, and Giang Phung:** Eco-innovation and Corporate Cost of Debt: A Cross-Country Evidence.

24-018 **Douglas Cumming, Armin Schwienbacher, and Yelin Zhang:** The Performance Puzzle in Venture Capital and Private Equity Style Drifts

24-017 **Douglas Cumming, Yuan Li, and Yimeng Yu:** Stock Market Manipulation and Corporate Venture Capital Investments.

Second Quarter | 2024

24-016 **Douglas J. Cumming, Sofia Johan, and Robert S. Reardon:** Governance and Success in U.S. Securities-Based Crowdfunding.



University of St Andrews
Scotland's first university

| 600 YEARS |
| 1413 – 2013 |